



SUPERCHARGED

THE INDEPENDENT MAGAZINE FOR TESLA OWNERS AND ENTHUSIASTS

MARCH 2024 N°27



New BluOS™ 4.0!

The premium multi-room music management platform



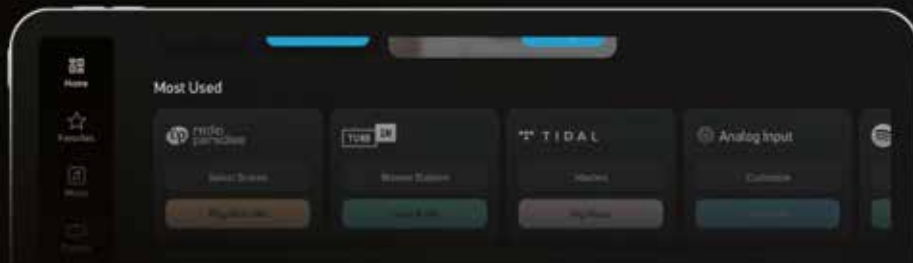
JUST GOT BETTER

Introducing BluOS 4.0 Controller App

BLUESOUND has released the brandnew BluOS 4.0 firmware which will give you a smarter and easier streaming-experience. The update revitalizes the BluOS Controller app experience with several improvements – a stunning redesign of the user interface, better navigation and improved search functionality to deliver a more personalized way to play and control music across multiple zones. The favorites screen delivers quick access to users' favorite content with a customizable view by playlists, artists, albums, songs, and stations. The users can now toggle easily

between "Now Playing" and "Play Queue" screens, with a new grouping icon and indicators for sampled audio quality and zone playing added. A new dedicated Search screen searches by music service for more specific and faster results.

Starting in October, users be prompted to download the official firmware update by following the prompts on the BluOS Controller app, available for both iOS and Android devices, as well as for Windows and macOS.



Find your **BLUESOUND** dealer

di Monaco

Stationsstraat 66 - 9100 Sint-Niklaas
03 776 24 40 - www.dimonaco.be



D&M beeld- en klankstudio

Beverestraat 4c - 9700 Oudenaarde
055 30 28 05 - www.d-en-m.be



Audiomix

Liersesteenweg 321 - 3130 Aarschot
016 56 10 62 - www.audiomix.be



Concepts

Wolvenstraat 2 - 9620 Zottegem
09 360 55 22 - www.concepts.be



HE Solutions

Turnhoutebaan 155 - 2390 Oostmalle
0495 55 76 91 - www.hesolutions.be



Arnout Deerlijk

Beverenstraat 23 - 8540 Deerlijk
056 71 96 52 - www.arnout.be

Arnout Kortrijk

Veemarkt 12 - 8500 Kortrijk
056 217 89 - www.arnout.be



Hifi Corner Antwerpen

Sint-Katelijnevest 53 - 2000 Antwerpen
03 23 299 50 - www.hificorner.be



Hifi Corner Schoten

Paalstraat 128 - 2900 Schoten
03 658 34 70 - www.hificorner.be



Hifi Corner Deurne

Jozef Verbovenlei 54 - 2100 Deurne
03 322 01 11 - www.hificorner.be



Beeld, Klank & Koffie Verheeken

Sint-Gillisstraat 22 - 9170 De Klinge
03 770 73 48 - www.verheeken.be



Key Highlights of BluOS 4.0:

- Improved Navigation
- Customized Content
- Centralized Access
- Improved Player Control
- Better & Faster Search





||
Zilton

WELLENS MEN

Lichtaartseweg 2
2200 Herentals
014 21 14 41
www.wellensmen.be

VOSSEN FASHION KURINGEN

Kuringersteenweg 343
3511 KURINGEN
011 26 21 61
www.vossen.be

VOSSEN FASHION TONGEREN

T-Forum, Luikersteenweg 151
Bus 16 - 3700 TONGEREN
012 39 15 00
www.vossen.be

AREZZO

Rammelstraat 22-24
9340 LEDE
053 80 07 96
www.arezzo.be

DEAR NEWEST OWNERS !
DEAR MODEL S PLAID, ROADSTER AND CYBERTRUCK 'CT' ENTHUSIASTS,
DEAR READERS,
DEAR TESLA OWNERS AND CLUB MEMBERS,
DEAR RESERVATION HOLDERS,
DEAR SHAREHOLDERS,
DEAR EV ENTHUSIASTS,
DEAR SPACE TRAVELERS,

AFTER A QUIET WINTER, WE WISH YOU A GREAT START FOR 2024 !

Welcome to your twenty seventh edition of SuperCharged, your independent Magazine for Tesla Owners, Reservation holders, Club Members, Shareholders and EV enthusiasts. Thank you for your readership. Once again, we lined up interesting topics and stories that you will enjoy discovering.

6

Welcome TO ALL new Owners ! The more the merrier, the 'Extended Family' is growing every day ! We are very pleased to cross roads with more and more Owners, waving at each other: We are delighted to have you onboard and we look forward to our exchanges ! Supercharged is a great way to break the ice and join the Community.

Tesla Owners Club Belgium Board wishes you a fruitful Year; filled with good times and great opportunities to meet and greet.

We have prepared for you a debriefing of our Texan visit, going the extra mile to spot and see up close the Cybertruck known as 'CT' before the first deliveries took place. Review our pictures and first impressions.

Quite a few miles down the road and closer to the Mexican border, we also seized the opportunity to witness History up close by 'visiting' Boca Chica. Amazing what gone through over the years. We even came across exploded and burnt concrete next to the launchpad. Impressive encounter. Read our detailed debriefing and take away some tips and tricks should you plan your trip over there.

End of the year was a great time to celebrate and put in motion the Light Shows. They took place Worldwide for our greatest pleasure. We reached out to Simon Pollock. Thanks to his coordination and Leadership, over 30 Clubs and up to 255 cars took part in this celebration. Read more in our interview.

And 'as usual, even more lifestyle topics and content are also featured in this edition.

WE CONTINUE WRITING OUR FAMILY STORY

AL DRIE GENERATIES LANG
EEN VASTE WAARDE IN GENT
VOOR EXCLUSIEVE HORLOGES EN JUWELEN



VANHOUTTEGHEM

TIME - BOUTIQUE - JEWELRY

GHENT

TIME

Dampoortstraat 1-3, Gent

BOUTIQUE

Voldersstraat 6, Gent

JEWELRY

Dampoortstraat 2, Gent

+32 (0)9 225 50 45

VANHOUTTEGHEM.COM

For new readers or simply wanted to read past editions ?

SuperCharged is available online, with past editions : <https://www.teslaclub.be/supercharged>

Thank you so much once more for your readership, we truly appreciate it.

We look forward to hearing from you, contact us through our Club website.

Thank you for your ongoing support and trust.

On behalf of Tesla Owners Club of Belgium vzw/asbl,

Martin Gillet

Vice President Global Communications and Marketing Tesla Owners Club Belgium asbl/vzw.

ON BEHALF OF TESLA OWNERS CLUB BELGIUM VZW/ASBL



Byron Soulopoulos
President
@soulopoulos



Gwenn Schoovaerts
Managing Director
@gwenn85



Martin Gillet
VP Global Communication
and Marketing
@mgillet



Christophe Duponcheele
Network Evangelist
@duponcheele



Kelly Van Eekel
Event Manager
@KellyVanEekel

FOLLOW US ON SOCIAL MEDIA twitter.com/teslaclubbe - www.facebook.com/TeslaClubBE
WWW.TESLA CLUB.BE - WWW.SUPERCHARGEDMAGAZINE.COM

VOLUME 27, MARCH 2024 | SUPERCHARGED – The independent magazine made by and for Tesla Owners & enthusiasts | CORRESPONDENT EDITOR: Martin Gillet | CIRCULATION: 20000 copies (excluding additional distribution) | FREQUENCY: Quarterly | Distribution: Tesla Owners Club Belgium members | EDITORS: Joanna Pays, Martin Gillet, Ella Scheers, Hilde Pauwels, Dominiek Saelens, Dominique Sergant, Matthias Vanherentals | PUBLISHER: AMG Group p/a Event Expo België – Atomveldstraat 8 bus 6 - 9450 Denderhoutem | DESIGN: Event & Expo Belgium | SALES: Erik De Ridder – tel.: 0486 13 13 13, e-mail: edr@eventbox.be | ADMINISTRATIVE & TRAFFIC ADVERTISEMENTS: Event&Expo Belgium – Hilde De Ridder – tel 09 228 22 84 – email: hilde@hdr.be | COPYRIGHT: No part of this publication may be used, reproduced or copied without express permission of the publisher | Cover photo Credit: Courtesy of Tesla Inc. | SUBSCRIPTION: May be ordered from Dominique – e-mail: dominique@event-expo.be for the cost of mailing (20 euros/year). Thank you to all our reviewers and special thanks to Chris. Responsible publisher: Erik De Ridder Uitgeverij AMG p/a Event&Expo Belgium

Disclaimer: Tesla Owners Club Belgium is an independent enthusiast non profit organization under Belgian laws and is not affiliated with Tesla Motors, Inc. or its subsidiaries. TESLA, MODEL S, MODEL X, MODEL 3, POWERWALL and the “TESLA”, “T” and “TESLA and T Flag” designs, and certain other marks, are trademarks or registered trademarks of Tesla Motors Inc. in the United States and other countries.

DETREMMERIE

BATHROOM FURNITURE



MEET OUR COLLECTION 'RECYCLED'

CLUB EVENTS

Club is always looking for great venues and ideas to organize cheerful events and memories. Feel free to submit ideas and locations, Community at work, the more ideas, the more creative, the merrier. Team Work !

All our events are listed online, join us and plan ahead as places might be limited due to popular demand :

<https://www.teslaclub.be/en/events>

May 1st 2024 : Hungary Tour

<https://www.teslaclub.be/en/events/hungary-tour>

SAVE THE DATE! [Wednesday 1 May 2024 - Sunday 4 May 2024] We'll travel to Hungary by Tesla. Hungary, home of Budapest, one of those legendary places everyone should visit. We'll discover the capital near the Danube, Balaton lake and wineries. It will be a unique mix of both a cultural and culinary discovery.

June 8th 2024 : Very S3XY Rally

<https://www.teslaclub.be/en/events/very-s3xy-rally-1>

SAVE THE DATE! Join us for an electrifying Tesla Rally in Limburg, Belgium!

Time: 8:30-22:00

Starting Point: Corda Campus, Hasselt

End Point: Surprise!

Get ready to embark on a thrilling adventure as we cruise through the scenic routes of Belgium in our sleek and cutting-edge Teslas. This rally is the perfect opportunity for Tesla owners to come together and celebrate the future of sustainable transportation.

This event is open for all Tesla Owners. Feel free to bring along your family and friends to share in the excitement. You'll have plenty of opportunities to network with fellow Tesla enthusiasts, exchange stories, and learn more about the latest advancements in electric vehicle technology.

Spaces are limited (max. 20 Tesla's), so secure your spot early to avoid disappointment. Don't miss this chance to be a part of an unforgettable Tesla experience !

Spread the word and share this invitation with your fellow Tesla enthusiasts. Let's come together to drive innovation and inspire a sustainable future !

If you have any questions or need further information, feel free to reach out to us. We look forward to seeing you at the Very SEXY Rally in Limburg !



www.gommaire.com


GOMMAIRE
organic living

CLUB EVENTS

July 28th 2024 Tesla Golf Cup 2024 Royal Keerbergen Golf Club

<https://www.teslaclub.be/en/events/tesla-golf-cup-2024>

We have been organizing the Tesla Owners Club Belgium Golf Cup for Tesla enthusiasts and Tesla Owners, for a few years. You'll have the opportunity to experience Golf for the first time with the Golf Initiation. No prior experience is required ! If you have your GVB HCP 36 or lower, you can participate in the Texas Scramble competition. We will enjoy a delicious barbecue at the end of the day. This is an open event for members and people who're not members yet.

August 30th 2024 Champagne Tour Cuvée 2024

<https://www.teslaclub.be/en/events/champagne-tour-2024>

Tesla Owners Club Belgium Champagne Tour 2024 in Champagne, France from Friday 30 August until Sunday 1 September 2024.

There are a limited number of Tesla cars allowed (2 people per Tesla) at this event as some parts are limited to a maximum of participants.

Included are: Friday afternoon visit Champagne Cave, dinner, Hotel room for 2 pers., Saturday Breakfast, Exclusive visit to Champagne Caves, Dinner, Sunday Breakfast, Lunch, Tesla Owners Club Belgium Polo, Car Sticker, etc.

Not included: Lunch on Friday, massages at the spa, and extra drinks at the bar & restaurant. *Don't drink & drive !

If you have any questions or need further information, feel free to reach out to us. We look forward to seeing you at the Champagne Tour!

Join the daily only conversations and news on twitter with the Community and over 17015+ peers, join us <https://twitter.com/teslaclubbe> Hashtag #TeslaClubBE and Facebook <https://www.facebook.com/TeslaClubBE/> - Share your stories and report news. Sharing is caring !

Already own a Tesla, join the extended Family and join our Facebook group <https://www.facebook.com/groups/TeslaOwnersBelgium>



www.gommaire.com


GOMMAIRE
organic living

SINT-MARTENS-LATEM | KNOCKE | LAREN

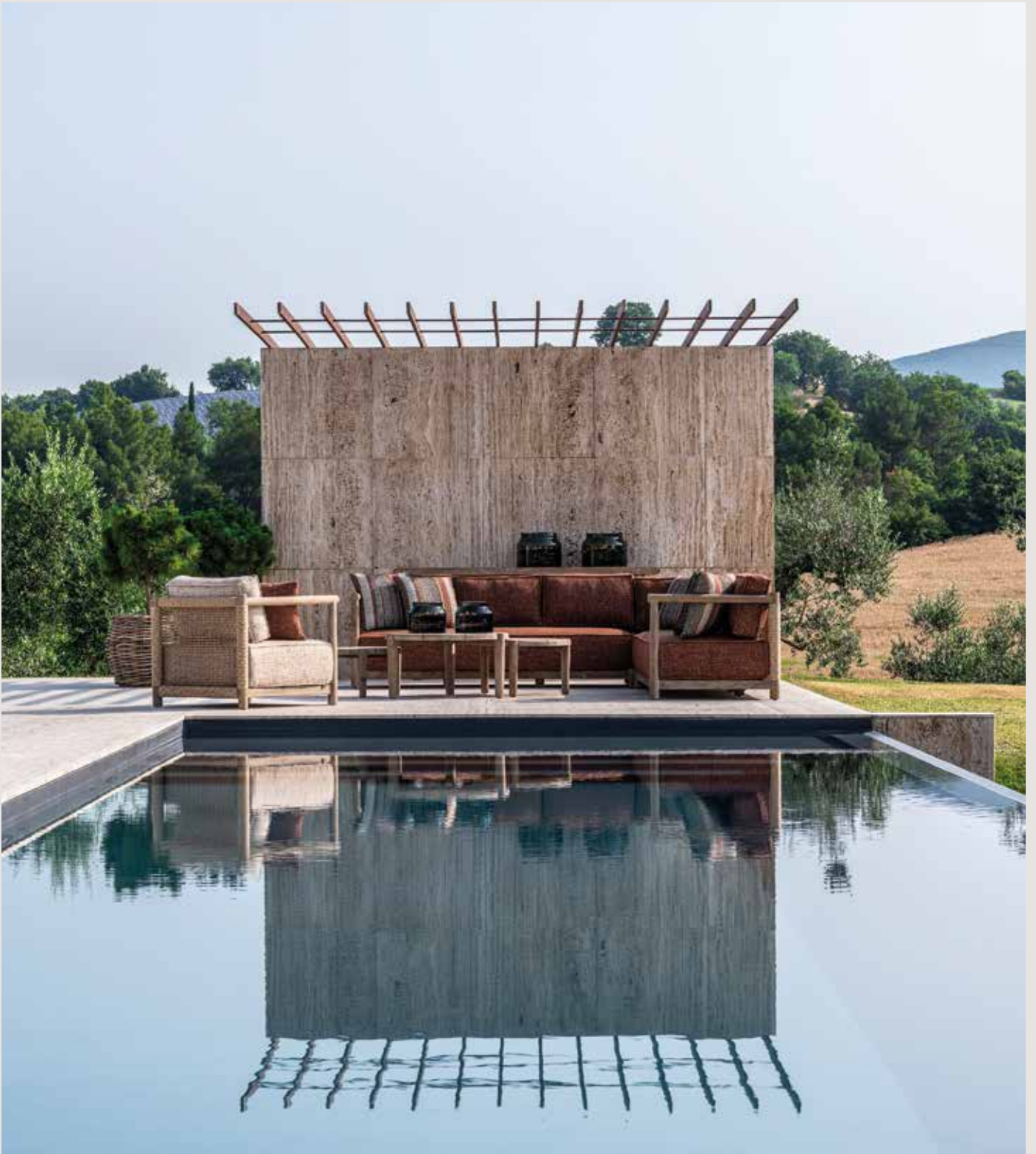
IBEX MASTERS - CHRISTIANE VLEUGELS

**SUPERREALISTIC ART
BROUGHT TO LIFE
WITH A PAINTBRUSH**



HORUS
GALLERY

artcenterhorus.com



www.gommaire.com


GOMMAIRE
organic living

TESLA CYBERTRUCK FIRST DELIVERIES IN THE US

Martin Gillet special reporter along with Board members Kelly van Eekel, Christophe Duponcheele, Gwenn Schoovaerts and Byron Soulopoulos.

TEXT: MARTIN GILLET - PHOTOS: BY THEIR RESPECTIVE AUTHORS



16

Austin, Texas. Having visited the BerlinGigaFactory, the Austin Tesla Gigafactory has lots of similarities. First by its size and the myriad of activities taking place. Tesla Owners Club Belgium Board members had the opportunity to visit Texas. After a peaceful journey, we landed in Austin with quite a few topics on our agenda. Our main objective onsite in Austin, besides meeting fellow Tesla Owners was to get acquainted with the Cybertruck, also referred to as 'CT'.

We were not disappointed. Running errands, we came across several Manufacturer's test units driving around in order to put on miles and support the data testing, shortly prior to the first official deliveries.

First encounter with the Cybertruck 'in the wild' is very exciting as you can somehow easily spot the design and the truck shape. Given the rich SUV and truck environment, the Cybertruck does not immediately in the traffic. Once spotted, naturally, the lines, the shape and the shining color attracts our attention.



The overall shape and design meets what we know of professional SUV like we have in Europe the Navarra or the RAM. It is massive. The frunk opens widely and could fit a whole range of material or even your groceries. Unlike other Tesla Models, we noticed the fact that the cargo area is not vertically deep, some goods could fall out when opening. The windshield is huge (so is the unique wiper fit) but most of us driving Model X, would not be lost.

The tires are massive too (we saw Goodyear tires size 285/65R20 on test Cybertruck). The lights, indicators are stylishly integrated in the design.

The logo Cybertruck is added to the frame of the entry door. Inside the Cybertruck, space is more than luxurious, with a large media screen set with all commodities. The steering 'wheel' is close to the yoke but provides a full round hence allows the drive to a 'better grip'. Cybertruck logo is embedded in the center of the steering wheel.





© Courtesy Tesla Inc



© Tesla Owners Club Belgium

Rear passengers also benefit from larger seats. We would just miss the rear window not opening, especially in the spring when temperatures are gentle. Like other Tesla Models, a rear screen is foreseen for the convenience of the passengers. Opening the doors might be a bit 'tricky' at first but we quickly get around it.

Cargo space for professional duties is very large and fits many purposes. It is equipped with power outlets, providing the opportunities for professional occupation at customer side. Tesla also provides the opportunity to fit an additional battery pack to extend the common range.

We would just miss perhaps a ladder in order to access the cargo bay but this is not a showstopper.

For a first onsite encounter, the Board was thrilled to see the Cybertruck 'up close and personal' and seize the opportunity to meet with the latest addition to the Tesla Models Family.

We look forward to welcoming Cybertruck in Europe in due course as many of us, many of you have placed a reservation.



© Courtesy Tesla Inc



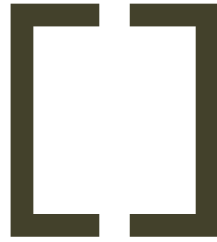
© Courtesy Tesla Inc

SPECIFICATIONS

Note: These are US specifications, European specifications are expected. For the time being, speculations highlight that a truck driving license would be required given the weight.

https://www.tesla.com/en_eu/cybertruck

- Weight: 3,104 Kgs
- Cargo: 3,423.5 Liters
- Wheels: 20"
- Seating: 5 Adults
- Displays: 18.5" Center Touchscreen / 9.4" Rear Screen
- Ground Clearance: 433 MM In Extract Mode
- Overall Width: Folded Mirrors: 2,200.7 MM, Extended Mirrors: 2,413.3 MM
- Overall Height: 1,790.8 MM
- Overall Length: 5,682.9 MM
- Supercharging Max/Payment Type: 250KW Max - Pay Per Use
- Charging Speed: Up to 206 Kms added in 15 minutes
- Warranty: Basic Vehicle 4 Years or 80,000 kms,
- Battery & Drive Unit: 8 Years or 240,000 Kms, Whichever comes first



CLASSIC DESIGN

RENTAL

Event furniture for any occasion.

WWW.CLASSICDESIGNRENTAL.BE

INFO@CLASSICDESIGNRENTAL.BE

0032 53 66 48 13

ccc
acredo



INSPIREREND.
INDIVIDUEEL.
DUURZAAM.



Bezoek ons in
Roomstraat 14
9160 Lokeren
+32 9 3494511



DE BRUYLOFT



RITAMAR PROPERTIES

Better life homes

Spain

UW DROOMHUIS IN SPANJE KOPEN?

Ritamar Properties is gespecialiseerd in sales op maat van Uw wensen in Spanje. Steeds ondersteund door ons team van Nederlandstalige advocaten. Ritamar Properties is een gelicentieerde makelaar.

Wij kunnen U helpen voor de gehele Costa Blanca, Noord en zuid, Costa C lida en ook tot 50 km landinwaarts, waar we vooral een grote vari teit aan mooie kusten, met mooie stranden en een perfect klimaat het hele jaar door hebben. De woningen en promoties die wij aanbieden kunnen zowel nieuw als tweedehands zijn, appartementen, villa's bungalows, penthouses zijn, maar ook op maat gebouwd, op percelen die wij beschikbaar hebben! H eel erg belangrijk daarbij, is dat U ons zo haarfijn mogelijk, laat weten wat Uw voorkeuren en prioriteiten hierin zijn, zodat wij voor U een perfecte selectie kunnen voorstellen!

Ritamar geeft een duidelijk professioneel advies, dat steeds juridisch ondersteund wordt door advocaten. Zodat U voor, tijdens maar ook na Uw aankoop, altijd een partner hebt die U professioneel kan begeleiden, tijdens Uw aankoop, fiscaal, notaris, hypotheek enz. veilig te laten verlopen.

Ritamar wil zich onderscheiden door een betrouwbare en professionele, "recht door zee" aanpak.

Daarenboven is ons advies gesteund door het spreken van verschillende talen. NL FR DE ENG Spaans.

Wat U ook zoekt, een perceel, bouwen, een sleutel op de deur villa of appartement, wij werken altijd op maat van de klant!



▼ SCAN QR-CODE



0475 24 65 47
rita@ritamarproperties.com
christa@ritamarproperties.com



www.ritamarproperties.com

ccc
acredo



INSPIREREND.
INDIVIDUEEL.
DUURZAAM.



Bezoek ons in
Roomstraat 14
9160 Lokeren
+32 9 3494511



DE BRUYLOFT

SAMSUNG ANNOUNCES COLLABORATION WITH TESLA AT CES 2024 FOR SMARTTHINGS ENERGY

SMARTTHINGS ENERGY IS THE FIRST TO INTEGRATE WITH TESLA'S API TO ENHANCE RESIDENTIAL ENERGY EXPERIENCE

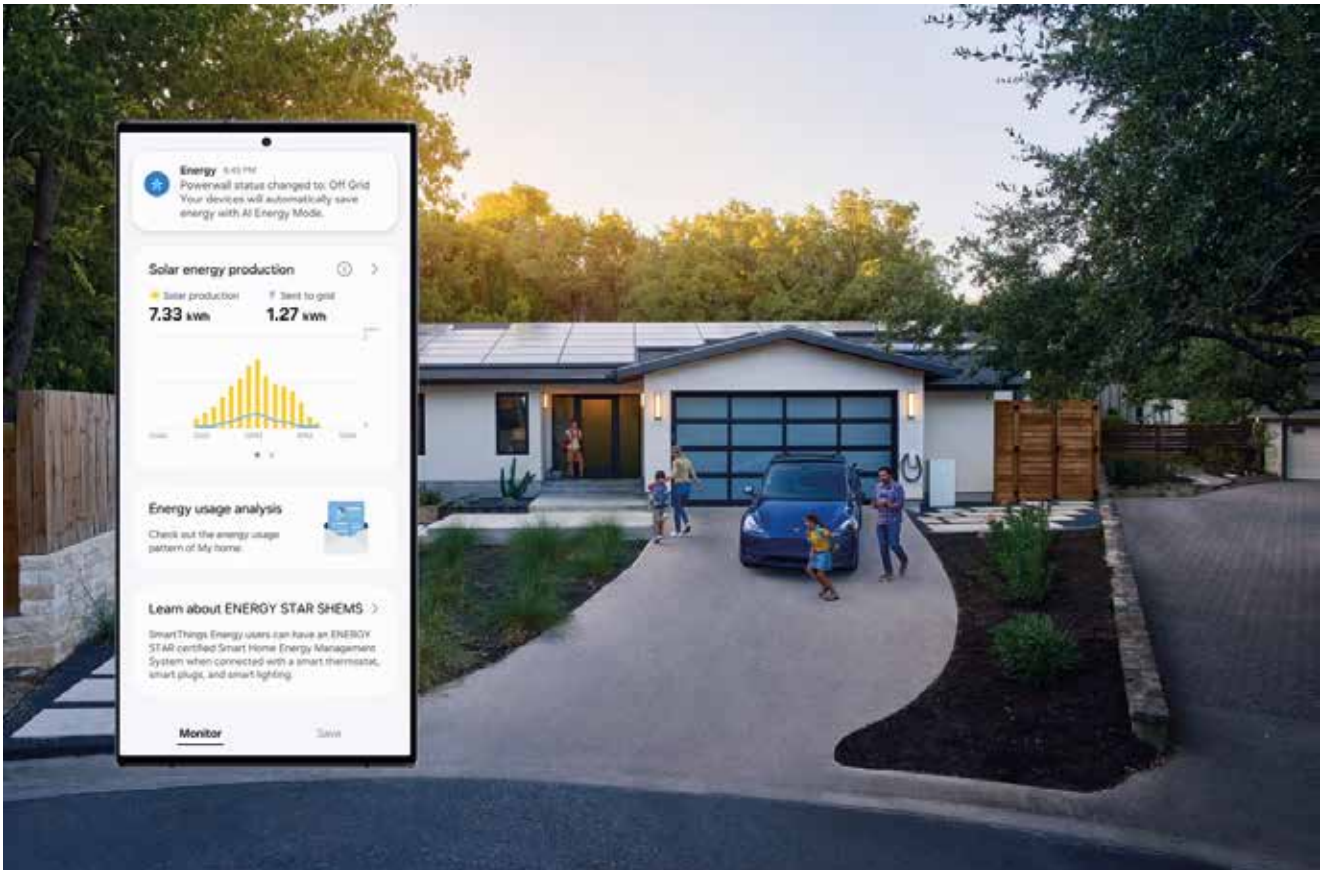
SOURCE: NEWS.SAMSUNG.COM

Samsung Electronics today announced that it has established a service integration with Tesla, to be showcased at CES® 2024, that will connect SmartThings Energy to Tesla products such as Powerwall home battery, Solar Inverter, Wall Connector charging solutions and electric vehicles (EVs). Made possible through Tesla's open APIs,¹ this collaboration will result in the further expansion of SmartThings Energy's already comprehensive level of connectivity and contribute to Samsung's ultimate goal of enabling more convenient, seamless home experiences for consumers.

"Tesla Energy's customers can now manage and monitor the power status of their homes through SmartThings Energy and Samsung devices in addition to the Tesla app, ensuring more access and connectivity," said Chanwoo Park, EVP and Head of IoT Development Team of Device Platform Center at Samsung Electronics. "This new collaboration is a key milestone for Samsung Electronics in making our solution more widely available beyond home appliances."

The key consumer benefit of Samsung's collaboration with Tesla allows SmartThings Energy to connect to Tesla Powerwall, Solar Inverter, Wall Connector charging and EVs, allowing SmartThings Energy to display information relating to users' energy production, storage and usage.

Additionally, consumers will be able to better prepare for power disruptions and outages through SmartThings Energy's ability to sync with the Tesla app's Powerwall "Storm Watch" function. This means that in the case of extreme weather events such as typhoons or heavy snowfall, users can be alerted through SmartThings on their connected Samsung TVs and mobiles in addition to the Tesla app. What's more, they can activate AI Energy Mode before and during power outages to extend the remaining backup energy stored in Tesla Powerwall.



SIMULATED IMAGE (FOR DEMONSTRATION PURPOSES ONLY) OF SMARTTHINGS APP ALERTING TESLA POWERWALL STATUS AND AI ENERGY MODE ACTIVATION WITH PHOTO OF TESLA PRODUCTS THAT ARE AVAILABLE TO CONNECT TO SAMSUNG SMARTTHINGS ENERGY

Samsung's utilization of the Tesla API is part of its continual drive toward making substantial progress on the Net Zero Home project and enhancing the multi-device experience of SmartThings users.

"At Tesla we are excited to add capability to our products to interact with other intelligent devices and software in customers' homes. We recently published FleetAPI, allowing developers to interact with Powerwall, Solar and Wall Connector in addition to our vehicles. We are pleased that Samsung has chosen to be an early developer, given its leading position in consumer smart home technology. Customers will be able to view the status of their grid connectivity across multiple devices and intelligently control home loads to

extend their Powerwall energy when off grid." said Drew Baglino, Tesla.

SmartThings Energy connected to Tesla Powerwall will be first shown at the Samsung booth at CES® 2024. The actual service is currently in development and is targeted to launch in the second quarter of 2024.2 Please note that the features described above are subject to change.

¹ An application programming interface (API) is a software intermediary that enables two different applications to integrate with each other.

² Service limited to countries where Tesla Powerwall is sold and SmartThings Energy is available.

TESLA WITH A SOLAR ROOF

'NOW I CAN CHARGE ANYWHERE'

One Tesla owner was tired of waiting for Tesla to provide a solar roof. He made one himself by mounting nine folding solar panels on his Tesla Model Y. After just a few hours in the sun, you can drive over 30 kilometres.

SOURCE: WWW.MSN.COM

Tesla had previously considered adding solar panels to its electric cars, but did not go ahead with the plan. Meanwhile, other car brands offer solar roofs as an option on some electric cars, but these solar panels often do not power the car's battery, only some other components.

One Tesla Model Y owner, nicknamed Somid3, took matters into his own hands and built his own solar roof, mounting nine 175W solar panels on top of the car. He says the solar panels provide enough power for a 32-kilometre range after five hours in the sun. The solar panels are folded down before driving. The weight of 75kg is not too bad. According to Somid3, the panels are "resistant to shocks, bumps, rain and snow".





"I can now recharge anywhere in the world," he writes in an explanation of the project. Somid3 used 3D printed parts and telescopic carbon fibre tubes, among other materials. The target price for the kit is \$4,000. He is making the documents available so that other EV owners can build it for themselves. The package is also suitable for the roof of many other electric vehicles.

NOT SO AERODYNAMIC

Obviously, having solar panels on the roof of your car has a major impact on aerodynamics and therefore on energy consumption. On the other hand, in the summer your car will always be in the shade of the panels, keeping it cooler.

CYBERTRUCK WILL GET A SOLAR ROOF ONE DAY

Tesla boss Elon Musk said in 2017 that he didn't like the idea of integrating solar panels into cars, but he backtracked on that in November around the launch of the Cybertruck. Musk said at the time that the electric pickup would eventually get a solar roof option, which would add 24 kilometres to its range. The big question is when this option will be available. There is no word yet on a sunroof option for other Tesla vehicles.



SPACE X STARBASE

BOCA CHICA FACILITY

Martin Gillet special reporter along with Board members Kelly van Eekel, Christophe Duponcheele, Gwenn Schoovaerts and Byron Soulopoulos.

TEXT & PHOTOS: MARTIN GILLET

Starbase is a spaceport, production, and development facility for Starship rockets, located at Boca Chica, Texas, United States. It has been under construction since the late 2010s by SpaceX, an American aerospace manufacturer.

26

Since the early beginning of Space X, we are monitoring up close to the progress (read the astonishing successful launches). Every launch, we are just thrilled as it became somewhat normal that 'all goes to plan'. True #Teamwork is the 'magic recipe' besides Elon Musk's Leadership.

Although not really close to Austin, Boca Chica Space X Test Launch facility is a must see. Without the charging stops, it is roughly over 5 hours drive from Austin.

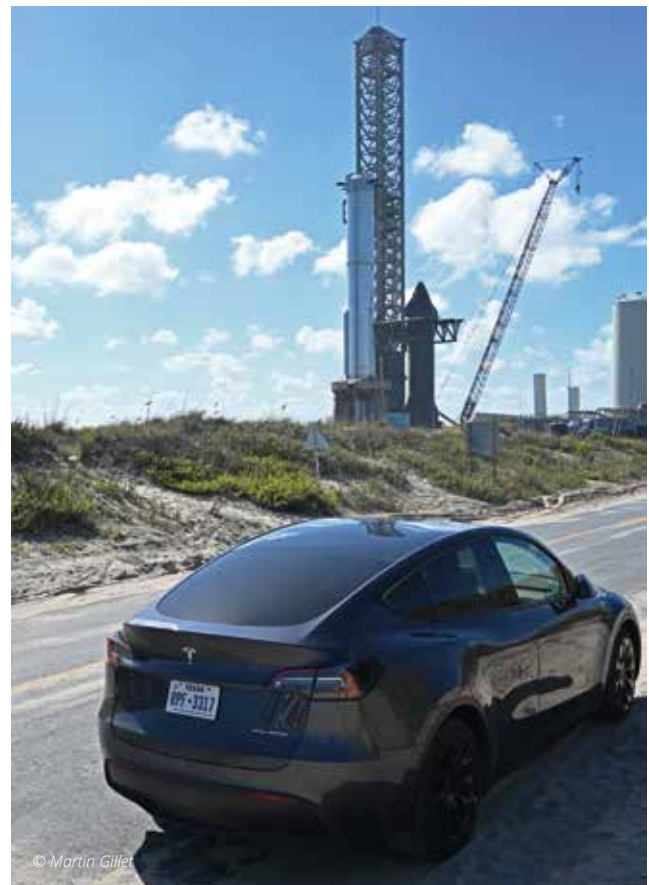
Traffic was fine on the way down to Boca Chica but you might want to add 'extra time' for safety.

As this is close to the border with Mexico, make sure to carry your passport at all times.

Before heading down, make sure to check the following:

- Weather forecast
- Road Closure as announced in due time by the Cameron County: www.cameroncountytexas.gov/spacex
- Space X Boca Chica groups on Social Media where you can interact with peers and learn from the latest information on what is happening
- Grab the essentials: Water / drinks and snacks as nothing is available currently onsite. Depending on the season, add sun protection to the list.

Good news, since early 2024, plans have been revealed with the intention to build a 'visitor center'.



© Martin Gillet

As this is a natural reserve and where applicable a private property, it is paramount that you respect the surroundings and in no circumstances trespass any grounds. Signs are set here and there but if not available, use common sense and do not invade or interfere with workers daily activities.

Totally optional but well worth it while affordable -weather permitting- go for the extra mile and book an helicopter ride. This is the best way to discover the facility from a safe distance before going onsite. To our great satisfaction, we used the services of Redline Helicopter Tours.



© Martin Gillet

The aerial view is just stunning as you can really see the facility size in its full dimensions.

Also interesting to notice the activities taking place during the flight day.

Just as interesting is the test launchpad visible from a distance. If you are lucky as we were, you can see up close test rockets being dis-or assembled.

Once we passed the last service station and the police check (due to the vicinity of the Mexican border), we drove all the way to the Starbase entrance. Next to it is the farm with a stunning lineup of rockets. Amazing to see all the progress made by the skilled workforce. We suggest you bring binoculars and/or your camera in order to zoom in to the interesting details, for example the assembly points and the rocket protective tiles.

Take advantage to make the acquaintance with locals 'spotters' and Space X fans who have lots of stories to tell.

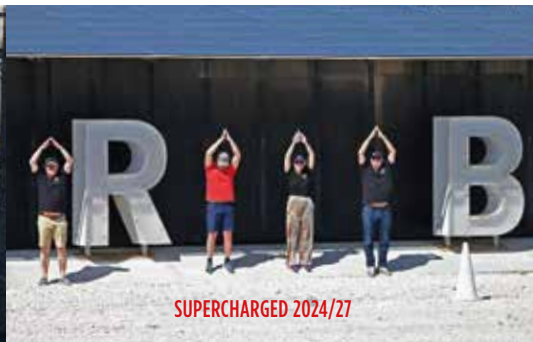
Once done, carefully head for the test launchpad. Access is possible until 'private property' signs are seen. By all means, respect the paths as this is a natural reserve. Once onsite, you can see the 1:1 size of the rocket and compare it to human size.

While you are touring the vicinity, we suggest having a walk on the beach (careful not to enter Mexico) in order to have great compositions from the dunes. And why not have a picnic onsite to close the day?

We had a blast onsite to witness History being made at such pace. No doubt this is one of our key highlight of our Texan Trip.



© Martin Gillet



SUPERCHARGED 2024/27



STARBASE

NEW PERSPECTIVES ON MENTAL HEALTH

The global COVID-19 pandemic has placed a spotlight on the importance of mental health. In the midst of rapid changes in economic, environmental, and geopolitical conditions, coupled with the rise of groundbreaking technologies and our fast-paced lifestyles, Belgians find themselves grappling with mental health concerns. In this article, we delve into the current state of mental health and explore solutions with renowned psychiatrist Dr. Caroline Depuydt.

TEXT & PHOTOS: ASPERIA



UNDERSTANDING THE LANDSCAPE

Recent statistics from INAMI (2021) reveal a concerning trend - burnout has surged to the forefront of mental health issues, with a staggering 46% increase in cases of burnout and long-term depression. While those aged 50 to 64 remain the most affected, the most significant rise is among self-employed individuals aged 25 to 39, with a jaw-dropping 151% increase over the last five years.

UNPACKING THE CAUSES

Mental health problems are complex, stemming from a multitude of factors including genetics, biology, development, psychology, social influences, lifestyle choices, and stress. Dr. Depuydt emphasizes that triggers can range from illness and accidents to work-related stress, social isolation, and even minor events that exacerbate existing tensions.

EXPLORING SOLUTIONS

Dr. Depuydt advises leaning on one's support network when facing mental health challenges, with friends and family playing a pivotal role. Primary care physicians serve as the initial point of contact, guiding individuals towards specialists when necessary. Mental health professionals, such as psychologists and psychiatrists, are crucial for comprehensive care.

EMBRACING INNOVATIVE APPROACHES

The integration of psycho-corporeal methods is gaining popularity, blending psychotherapy with mindfulness meditation and physical activities like yoga and pilates. These holistic therapies emphasize the importance of balancing both body and mind, incorporating elements like nutrition and sleep in maintaining mental wellbeing. Stacy Jacques, Wellbeing Manager at Aspria Avenue Louise, highlights how their members are increasingly focusing on psychological fitness, diversifying their physical activities and utilizing spa facilities for recovery. The team's expertise in nutrition further enhances the holistic approach.



THE POWER OF PHYSICAL ACTIVITY

Regular physical activity has a profound positive impact on mental health - it enhances concentration, reduces stress and anxiety, boosts mood, and improves sleep quality. Dr. Depuydt underscores the importance of self-compassion, encouraging individuals to engage in activities that support their wellbeing without guilt. Stacy echoes this sentiment, emphasizing that physical activity should primarily be driven by self-care, contributing to a harmonious balance of physical and mental wellness.

PREVENTION TAKES CENTER STAGE

A recent study by the University of South Australia demonstrates that physical activity can reduce symptoms related to mental health problems by 43%, particularly depression, anxiety, and psychological distress. Brian Morris, CEO & founder of Aspria, reinforces this message at the OECD Health Forum, underlining the role of health in economic resilience. Aspria clubs offer a range of activities, wellness facilities, and co-working options, facilitating a well-rounded lifestyle and fostering a sense of community.

In conclusion, experts like Dr. Caroline Depuydt* and Aspria teams are committed to promoting mental wellbeing in our demanding world. As we navigate these challenges, embracing a holistic approach to mental health, encompassing physical activity, mindfulness, and self-compassion, can lead us towards a brighter, more balanced future.

www.aspria.com

**Dr. Caroline Depuydt is a psychiatrist and Deputy Medical Director at Espylon (formerly La Ramée and Fond'Ray). She is also the author of two books on the subject: "Bien dans ma tête grâce aux neurosciences" (Well in My Head Thanks to Neuroscience) and "J'arrête d'en faire trop !" (I Stop Overdoing It!)*





Atelier
NOTERMAN

EST.  1946

WALK TO HAPPINESS



GEMINI

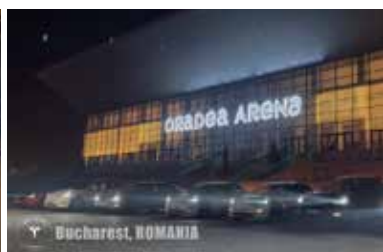
Juwelen voor mannen, jongens, vaders en zonen
Voor ondernemers, en wereldreizigers,
voor denkers en doeners

GEMINI-OFFICIAL.COM

tesla light show

TESLA LIGHT SHOWS ARE YOU NOT ENTERTAINED?

Interview and text by Martin Gillet. Photos by their respective owners.



Tesla Community is always a treat. One of the perks is that we are never bored. You might have come across the Tesla Light Shows or even better taken an active part in these shows.

One name stands out in the Community when it comes to organizing and aligning all shows. I reached out to Simon Pollock to know more about these events.

Simon is 'just' an IT consultant geek with 'too much time on his hands', who started creating Light Shows on his driveway for fun. It quickly became an obsession. Starting with his first group show in Las Vegas with fellow US Light Show creators Tesla Toybox & VegasTeslaLightshows, forming a Tesla "T" with just 11 Tesla's, then he moved on to work with clubs all over the world, putting on shows in different cities. View or review the magic :

© Simon



- XLightShows.io in Las Vegas, Nevada
<https://youtu.be/526dvRQwWVM>
- Tesla Club Austria Silence Rallye, Austria
<https://youtu.be/zGj0BM6hiq0>
- Tesla Owners Club Supercharged, United Kingdom
<https://youtu.be/m3SjPatKai4>
- Tesla Owners Silicon Valley's Tesla Takeover, California
<https://youtu.be/FkdnrpCYxHs>
- TFF's 2befair Elekrische Community EEvent, Germany
<https://youtu.be/xSbkc0eRyg>
- XLightShows.io in Toronto, Canada
<https://youtu.be/kh7ojgYtkdo>
- XLightShows.io in Costa Rica, Costa Rica
<https://youtu.be/fk5XpjjYqv4>
- Tesla Club Finland's World Record Light Show, Finland
<https://youtu.be/vvX6Fhbirj4>
- Teslacon, Singapore
<https://youtu.be/pW9gHJ65b6c>
- Worldwide Tesla Owners Christmas Light Show
<https://youtu.be/0xk9-vKZnt4>

Besides well known music and themes that most music fans and movie buffs will quickly identify, Simon is creating his own compositions, inspired by his own experiences.

It is all about Teamwork, liaising with all Clubs that have reached out or shown interest, producing dedicated Light Shows. Christmas 2023 was an amazing experience despite the short timing (7 days!), more than 300 shows in 36 countries featured lots of Tesla, from a gathering of a couple of cars up to 255 cars! The Show started from New Zealand then onwards to Australia, South Korea, Asia, Thailand, Dubai, Europe, Morocco, Canada, the US, Mexico, Uruguay to end up in the islands of Hawaii. 24 hours of Fun and activities. A major Achievement for this project built on short notice. Hundreds of Light Shows can be downloaded here: <https://xlightshows.io> in the meantime, mark your calendars with a Tesla Light Show coming to a place near you! Or engage with Simon and get onboard!



2024 SHOWS CONFIRMED

- Norway Light Show on Ice – March
- Washington DC Cybertruck Show – March
- Tesla Takeover Europe – May
- Tesla Owners Campers Day Sweden – June
- Tesla Owners Club UK's Supercharged – June
- The X Takeover California – July
- Zandvoort F1 Circuit, Netherlands – September
- Finland World Record Attempt – October
- XLightShows.io in Las Vegas – October
- Worldwide Tesla Owners 2nd Annual Christmas Light Show – December
- Global New Year's Countdown – December

LA BUTTE
100
AUX BOIS
— Est. 1924 —



CELEBRATING A CENTURY OF ELEGANCE



Five Star Superior Hotel La Butte aux Bois | Paalsteenlaan 90, 3620 Lanaken, Belgium
www.labutteaubs.be | info@labutteaubs.be



Watches

Rolex | Chopard | Breitling
Hermes | Tudor | Tag Heuer
Baume & Mercier | Longines

Jewelry

Chopard | Pasquale Bruni | Messika
Casato | Gucci | Bigli
One More | Anna Maria Cammilli

Nys Jewellers

Timeless tradition since 1946

Nys Boutique

Korte Steenstraat 9
8500 Kortrijk

Nys Exclusive

Lange Steenstraat 20
8500 Kortrijk

Past.
Present.
Future.



www.nys.be

quatre mains piano's

Muzikale Meesterwerken

Hoe een vleugelpiano
jouw leefruimte
kleur geeft

36



QM



De piano draagt een zekere mysterieuze allure met zich mee. Elke noot lijkt een verhaal te fluisteren, en elke melodie opent een portaal naar een wereld van emoties die moeilijk in woorden te vatten is.

Een piano in huis past in een trend die samenhangt met de zoektocht naar welvaart en vervulling dicht bij huis. Het idee van welvaart wordt steeds vaker in verband gebracht met kwaliteit van leven en persoonlijke voldoening. In de drukte van het moderne leven vinden velen rust en ontspanning aan de piano. Pianospelen is een krachtige bron van welzijn en mindfulness en een expressieve uitlaatklep voor emoties.

Leren pianospelen is vandaag de dag toegankelijker en eenvoudiger dan ooit, dankzij YouTube tutorials en online pianolessen. Het feit dat je kunt leren op je eigen tempo, op elk moment en overal waar waar een piano beschikbaar is, maakt het proces eenvoudiger en heel aantrekkelijk.

De vleugelpiano

Pinnacle van pianoluxe

De vleugelpiano, met zijn majestueuze verschijning en krachtige resonantie, is het summum van pianoluxe. De vleugel symboliseert niet alleen muzikale expressie, maar ook een levensstijl van verfijning en esthetische verwennerij. Vervaardigd door meesterambachtslieden met een diepgaande toewijding aan hun vak, stralen deze instrumenten pure elegantie uit. Van met de hand gepolijste houten behuizingen tot ingewikkeld vervaardigde details, elk element getuigt van vakmanschap op het hoogste niveau.

Wereldwijd toon de pianomarkt voor premium instrumenten een sterke en stabiele groei en de prognoses voor de komende jaren zetten deze trend door. Consumenten hebben een gro-

tere waardering ontwikkeld voor hoogwaardige piano's, zowel vanwege hun esthetische waarde als vanwege de superieure geluids- en bouwkwaliteit.

De sterk groeiende muziek- en filmbranche zorgt ook voor wind in de zeilen. Het is opvallend in hoeveel films en series op de meeste diverse wijzen de piano een rol speelt, van Lucifer tot Tar. De piano is ook in de muziekbranche alom tegenwoordig. Denk maar aan Alicia Keys, Lady Gaga, Jamie Cullum, Nora Jones, en ga zo maar door.



www.quatremainspianos.be
 mail@quatremainspianos.be
 +32 9 233 80 59



De keuze van Quatre Mains Piano's

C. Bechstein

Duitse Traditie en
Toonaangevende Kwaliteit

Quatre Mains Piano's ziet C. Bechstein als een icoon van Duitse traditie en uitmuntendheid. Met een rijke geschiedenis die teruggaat tot 1853, straalt C. Bechstein geschiedenis uit, meesterlijk vakmanschap en een prestigieuze typisch Europese klank. De ambachtslieden van C. Bechstein handhaven strikte normen en perfectioneren de kennis van welleer, resulterend in een warme, rijke klank. Hun gepassioneerde streven en harde werk naar een verdiende plek in de markt, bracht hen in 2023 naar de eerste plaats op de Duitse markt.

Wij geloven dat dit merk zal opbloeien in zijn rol om meer diversiteit te brengen in het pianolandschap. Duitse traditie, een klinkende naam en bovenal een visionaire CEO met een helder doel - een op en top Europees premium brand uitbouwen.

Yamaha

De Onbetwiste Marktleider
in Pianoland

Quatre Mains Piano's erkent Yamaha als een meester van Japanse precisie en innovatie. Het merk, geworteld in technologische excellentie, heeft wereldwijd een sterke aanwezigheid. Yamaha heeft een breed scala aan piano's, variërend van instapmodellen tot high-end vleugels. Het bedrijf staat bekend om zijn consistent hoge en betrouwbare kwaliteit en variatie in prijspunten, waardoor het een populaire keuze is voor zowel beginners als ervaren pianisten.

Met een indrukwekkend marktaandeel van 39% in de wereld van akoestische piano's en 47% in de digitale pianosector, heeft Yamaha zich gevestigd als de onbetwiste marktleider in de piano-

branche wereldwijd. De cijfers weerspiegelen niet alleen het vertrouwen van consumenten in de kwaliteit van Yamaha-piano's, maar benadrukken ook de veelzijdigheid van het merk, dat zowel traditionele akoestische als moderne digitale instrumenten omvat.



Wat Yamaha verder onderscheidt, is de toewijding aan innovatie. Met maar liefst 25% van hun wereldwijde omzet toegewijd aan onderzoek en ontwikkeling (R&D), blijft Yamaha voorop lopen in het creëren van cutting-edge technologieën en het verfijnen van hun instrumenten. Deze inspanningen onderstrepen Yamaha's voortdurende toewijding aan het leveren van superieure muzikale ervaringen aan een wereldwijd publiek.

Fazioli

"Quality whatever it takes"

Het Italiaanse FAZIOLI, is een van de jongere pianomerken in vergelijking met concurrerende pianomerken zoals C. Bechstein die al ruim 150 jaar bestaat. Ondanks dat FAZIOLI nog maar 40 jaar bestaat, hebben ze met hun compromisloze benadering van kwaliteit en hun unieke ontwerpen een verfrissende wind in het pianolandschap gebracht doen waaien. Paolo Fazioli

is er op zijn eentje in geslaagd om de pianowereld in de 21ste eeuw terug alert en innovatief te maken, wat Henry Steinway en Karl Bechstein hem voordeden in de 19de eeuw en Bartolomeo Cristofori in de 17de eeuw.

Sinds het begin heeft FAZIOLI consequent zijn filosofie naar voren gebracht: met de hand vervaardigde vleugelpiano's, gecreëerd voor de meest veeleisende pianovirtuozen. FAZIOLI vleugels staan bekend om hun helderheid, expressiviteit en dynamisch bereik. Het merk heeft zich snel een plaats

veroverd in de allerhoogste regionen van de muziekwereld. Artiesten worden aangetrokken door de opvallende combinatie van Italiaanse esthetiek en technologische innovaties die FAZIOLI definieert als een eigentijdse krachtpatser in de wereld van luxe piano's.

Een Divers pianolandschap

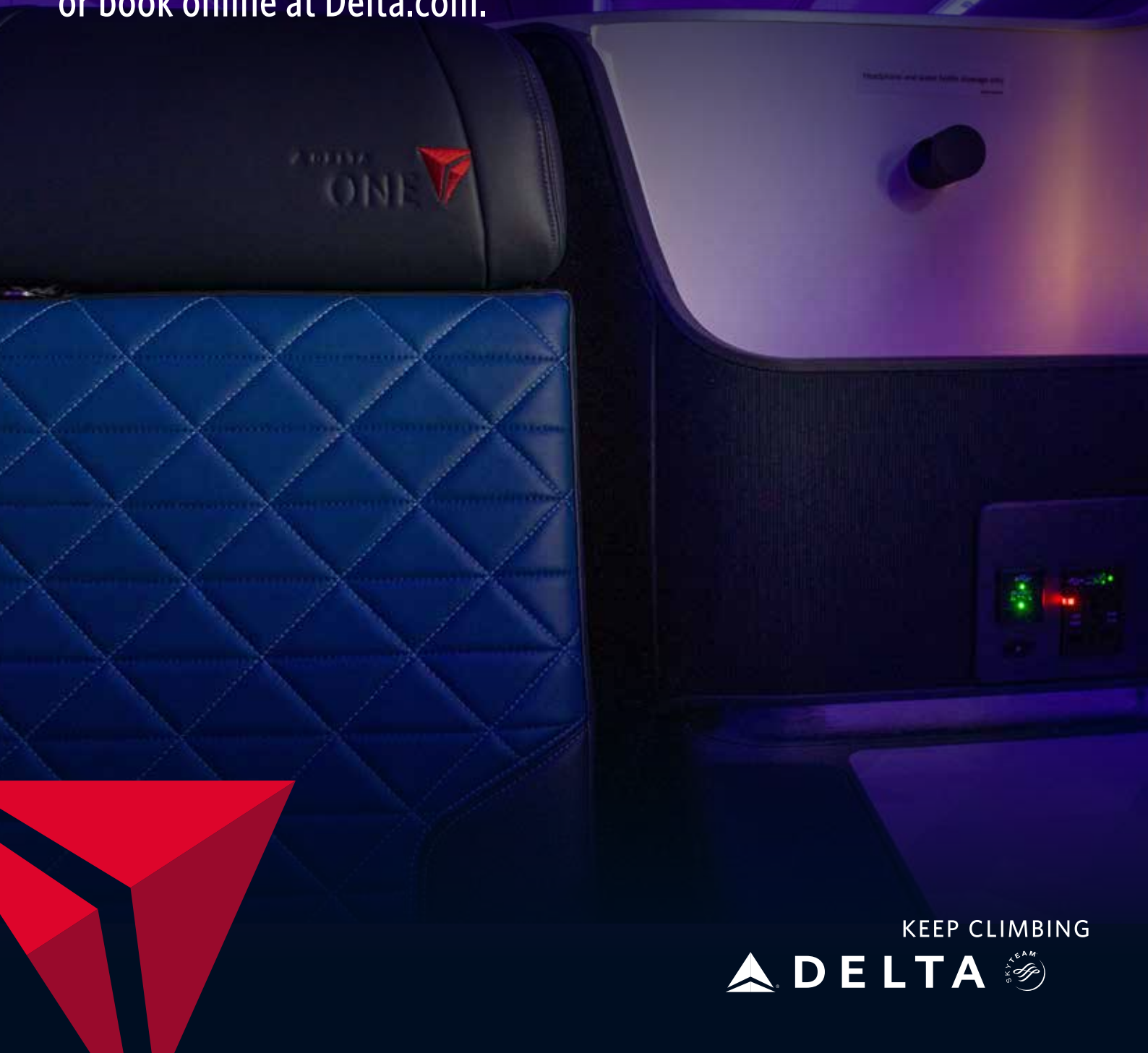
verrijking door verscheidenheid

Quatre Mains Piano's ziet de verscheidenheid van C. Bechstein, Yamaha en FAZIOLI als een verrijking van het pianolandschap. Elk merk draagt bij aan deze symfonie van klank en luxe, waarin traditie, innovatie en compromisloze kwaliteit samenkomen.

**Ontdek de magie van
muziek en luxe bij
Quatre Mains Piano's**

ELEVATED COMFORT FOR IMPROVED HEADSPACE.

Recline, dine, power up and refresh between Brussels and New York-JFK routes in Delta One®. Contact your travel agent or book online at Delta.com.



Beolab 8

Fidelity from
every angle



B&O



Bang & Olufsen Audiomix
Liersesteenweg 321
3130 Begijnendijk

Bang & Olufsen Liège
Bd de la Sauvenière 176
4000 Liège

Bang & Olufsen Mechelen
Ijzerenleen 4
2800 Mechelen

Bang & Olufsen Rosseel Kortrijk
Grote Markt 36
8500 Kortrijk

tomgoris@audiomix.be
016/56.10.62

info@advisionliege.be
04/262.73.46

info@sfeer-audio.be
015/97.01.67

kortrijk@electorrosseel.be
050/20.95.65

Bang & Olufsen Rosseel Loppem
Torhoutssteenweg 39
8210 Loppem

Bang & Olufsen Rosseel Oostende
Karel Janssenslaan 37
8400 Oostende

Bang & Olufsen Spelier
Leuvensesteenweg 579
3070 Kortenberg

Bang & Olufsen Teleprince Brussel
Avenue du Prince de Ligne 24
1180 Uccle

william@electorrosseel.be
050/20.95.65

oostende@electorrosseel.be
050/20.95.65

birgit.spelier@spelier.be
02/756.58.60

info@teleprince.be
02/374.98.49

BANG & OLUFSEN

MAARTEN SCHAUBROECK

ARTIST-DESIGNER, PASSIONATE ABOUT STEEL

SIGNATURE, A SYMBIOSIS OF ART AND DESIGN

You have undoubtedly already seen them, the giant cats on the roofs of companies along the E17... if not, take a look and admire the many other works of artist-designer Maarten Schaubroeck, who has been expressing himself expressively in steel for 20 years. His large-scale metal installations such as bobcats and robust gorillas are undoubtedly his signature pieces. Maarten Schaubroeck's creations are an interaction between art and design and are often functional. Individuals, companies, public organisations and local authorities find their way to the IZR art studio of this charming cultural ambassador of Roeselare.

TEXT: ELLA SCHEERS - PHOTOS: MAARTEN SCHAUBROECK & IZR



Maarten, where do you find your inspiration?

I am rather observant by nature. I don't look for inspiration, I just find it in everyday life. For example, the cats along E17. I have two cats myself and they regularly sit with me in my studio. You can see their playfulness, their activity and their curiosity about what is going on around them, underneath them and above them, and how they react to it. This is how I came up with the idea of linking the cats to the activity of the E17, making them spectators, so to speak, of the vehicles below, which they follow with a curious gaze. Sometimes a word, an image, a colour or a smell is enough to spark my imagination.

What is it that you are most proud of?

If I had to choose one that has stayed with me the most, it would be the sky roots in the Binnenhof in Kortrijk. The Sky Roots are three iron trees, each as tall as a house, that twist upwards. They symbolise the budding and probing search for stability within the community. They grow from the earth to the sky, searching for a foothold, a fertile future. It was my first sculpture integrated into a public space. You don't forget something like that. In the cemeteries of Gullegem, too, I remember above all the feeling, the emotional involvement, the feeling of being able to mean something. I was allowed to create a zone there, an environment, with corten steel elements. An environment that offers a different experience from a traditional cemetery. More playful, aimed at families who come to visit the butterfly garden with small children, brothers or sisters. The opening of the Butterfly Garden took place on the eve of World Lighting Day. Lights or candles are lit around the world to remember children who have died and to bring families together, which is the purpose of the Butterfly Garden. The story just rings true.

What are your dreams as an artist/designer?

Some time ago I did an installation called 'Humans in Motion'. It represents the all-encompassing connections between people. The seemingly identical figures take on different forms. Steel human figures telling a story. People in motion. Every connection and every story is unique. Individuals forming relationships. About life. As fascinating reflections on ourselves. Contrast. The individual enhanced by the group. Dynamics and silence. Metal and poetry. Hard and soft. Power and emotion. Movement and silence. I would like to make these 'humans in motion' in a larger format, a real forest of people that you can actually walk through, under the crown of human relationships.... Who knows, maybe one day this dream will come true.

ALL-ROUNDER

Maarten is an enthusiastic and driven artist, he knows the material he works with very well and is extremely creative with a great attention to detail. He was drawn to art at a young age, and with a preference for steel or IZR, 'iron' in West Flemish, he grew to specialise in large sculptures in various metals, balancing art and design. Maarten combines creativity and functionality with a twinkle in his eye. The cats on the E17 symbolise the bustling region. The giant head that floats above the Dranouter festival, as part of a project by the mental health organisation "Te Gek?!", was created by Maarten Schaubroeck from a concept by fellow artist Sven from Unik-ID. A unique challenge. Maarten also likes to place his work in public spaces. His creations can be found in cemeteries and residential care centres. The same goes for a social project for an organisation in Ypres that works to reintegrate children and young people into society. Maarten designed an installation of symbolic 'nests'. The result will be on display in 2025. In Roeselare, Peer in the Noordhof and Observatiepost at the head of the canal are eye-catching ex-



amples of functional art that involves the public. As an artist, he also works as a product developer of indoor and outdoor furniture and decorative lamps. The modular TèTaTèt is a showpiece of his collection, a table and seat in a timeless design.

APPRECIATED

Maarten is modest about it, which is to his credit, but his artwork has already won a number of awards. His robust gorillas were part of an exhibition at the Rivierenhof in Antwerp. The gorilla is a powerful symbol, a lord and master, a primal element in which the power of steel can be found. At first glance, this aura is unaffected by the transparent, airy structure. And yet: strength and vulnerability. These lords and masters installed themselves in different parts of the world. Their transit through Europe started from the North Sea to the MAS and Rivierenhof in Antwerp, then on to Mainz in Germany for several months before returning to the park in Antwerp. The gorilla as a family member and part of the family tree. Even the eagles, which can still be found in the Rivierenhof today, seem to fly effortlessly over the park's grounds. An ever-changing spectacle of nature in motion. Sky and clouds in an interplay. An eagle as a symbol of beauty, strength and independence. Long before a storm breaks, an eagle will feel the storm coming. It will not flee from it, but use it as strength to fly higher and soar above it. This is where Maartens story begins. Drawing strength from struggle. The greater the challenge, the greater the power to create. Inspiration and strength. Maarten Schaubroeck is fascinated by facets. This fascination can also be found in his work High Clouds. The chaos that forms back into a whole that is never the same. Metal facets become floating clouds. Each facet is an individual. Welded into a whole. The facets refer to the diversity of man and community. Nothing looks the same from another angle. Each one has its own story. A whimsical cloud structure is created, a play of shadow and light. Transformation from facets to clouds, from shadow to light. Constantly changing contours. Dynamic.

Maarten's art can be found in various places at home and abroad, from Kortrijk, Waregem and Bruges to Kampenhout, German Mainz and even Tokyo. Maarten has his studio in Houthulst, but has already been commissioned by his home town of Roeselare. For example, Roeselare commissioned Maarten to create a work



in the inner garden of the historic town hall, which will create an atmosphere for wedding ceremonies. In this way, Maarten creates a visual history in Roeselare and far beyond. In 2024 there is still a lot in the pipeline. In a personal project, because of his love for sculpture, Maarten is also working on the second part of his homage to the series of classical sculptures. Having already created The Thinker, he is now working on The Discus Thrower, which will be exhibited in a unique location this autumn.

Maarten will also be taking part in Atelier in Beeld again this year, on 4 and 5 May. Atelier in Beeld is an open studio weekend for visual artists in Flanders and Brussels, ideal for visiting his studio. His works speak for themselves and blend in with the surroundings. He is an artist as well as a designer and craftsman. Maarten & IZR Studio has since built a reputation as strong as steel. Maarten Schaubroeck, master of steel.

www.maartenschaubroeck.be
www.izr.be





interfone®

Telecoms Solutions for your Business

www.interfone.be

SUPERCHARGED 2024/27

OP ZOEK NAAR EEN EIGEN, EXCLUSIEF VAKANTIEHUIS?



IN OOSTENRIJK

LUXE Chalets & Appartementen
INTERESSANTE Investeringsobjecten

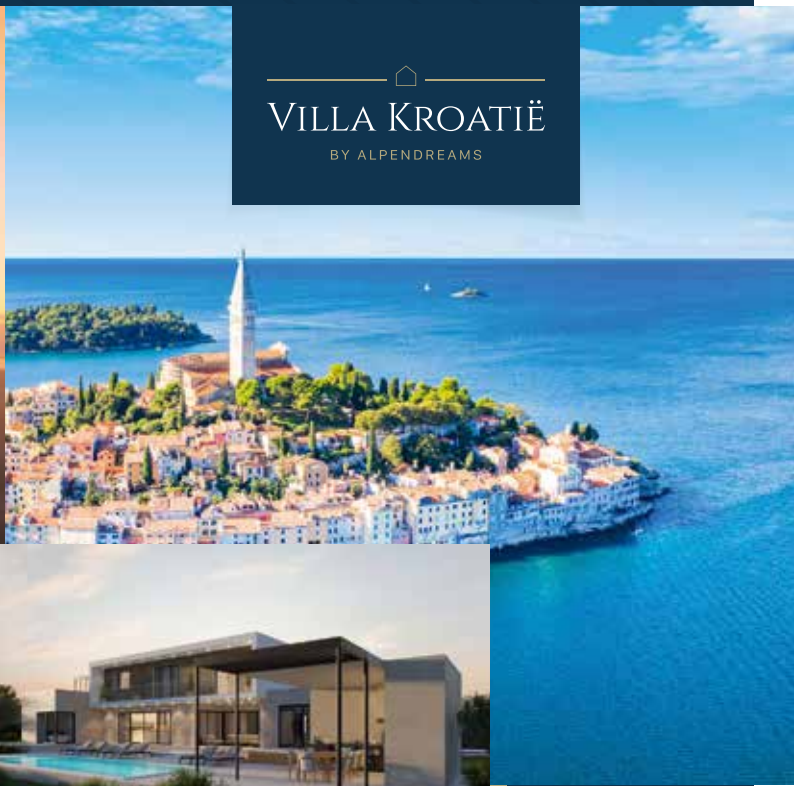


IN KROATIË/ISTRIË

LUXE vrijstaande vakantievilla's
INVESTEER in toeristische groeiregio

Alpendreams
SINCE 2006

VILLA KROATIË
BY ALPENDREAMS



WAT DOEN WIJ VOOR U...

Het voor onze klanten selecteren van de mooiste plekjes is waar we in gespecialiseerd zijn. Wij gaan voor locaties waar we zelf in geloven. Wij begeleiden bij uw aankoop in **Oostenrijk & Kroatië** van het allereerste contact tot en met de oplevering / overdracht. Wij zijn **Mondi Approved**: een grote extra zekerheid voor u!



CONTACT
info@alpendreams.eu



**Specialist in lederen
en stoffen zitmeubelen
op maat verkrijgbaar in
meer dan 150 kleuren**



boss/cuir

Artisanaal zitcomfort sinds 1979



Sofas & Déco

Stoffencollectie

CHARLEROI ▶

Avenue des Etats-Unis 25 • 6041 Gosselies

Tel. 071 375 375

NAMEN ▶

Chaussée de Marche 881 • N4 • 5100 Wierde

Tel. 081 21 00 23

◀ **WATERLOO**

Chaussée de Bruxelles 59 • 1410 Waterloo

Tel. 02 354 65 88



Ledercollectie

www.universdu cuir.be • Open op zondag



BREITLING



The all star squad

Giannis Antetokounmpo
Chloe Kim
Erling Haaland

#SQUADONAMISSION



| GILSON JUWELIER KNOKKE
Kustlaan 265-267, 8300 Knokke
| GILSON JUWELIER BRUGGE
Steenstraat 63-65, 8000 Brugge
| GILSON JUWELIER BRUSSEL
Waterloolaan 38, 1000 Brussel

| NYS EXCLUSIVE
Lange Steenstraat 20, 8500 Kortrijk
| VANHOUTTEGHEM
TIME & JEWELRY
Dampoortstraat 1-3, 9000 Gent

AUDIOMIX

add emotion to your life



Beleef dankzij Audiomix alle emoties die beeld en geluid kunnen losmaken.

Ontdek bij ons alle mogelijkheden. Bespreek ze met onze specialisten, vraag advies, test uw favoriete toestellen uit, selecteer, kies de toepassing die helemaal met uw wensen overeenkomt, maak gebruik van onze professionele plaatsingsdienst en vooral... geniet.

Wij garanderen een zorgeloos genieten met onze totaalprojecten (renovatie en nieuwbouw voor uw huis of zaak). Onze experts adviseren u om de beste keuze te maken uit ons uitgebreide gamma en onze technische dienst zorgt voor een perfecte installatie.

Bovendien kan u altijd terecht op onze webshop. Ook daar vindt u de exclusieve producten en scherpe prijzen die uw leven zoveel aangener zullen maken.



THE BIGGER PICTURE OF AUTOPILOT SAFETY

While there are many articles that do not accurately convey the nature of our safety systems, the recent Washington Post article is particularly egregious in its misstatements and lack of relevant context.

TEXT & PHOTOS: CREDIT AND COURTESY TESLA INC

50

At Tesla, we believe we have a moral obligation to continue to improve our already world-class safety systems. At the same time, we also believe that it is morally indefensible not to make these systems available to a wider range of consumers, given the incontrovertible data that shows they save lives and prevent injuries.

Regulators around the world have a duty to protect consumers, and the Tesla team looks forward to continuing to work with them towards our common goal of eliminating death and injury on our roads.

Below are some key facts, context and background.

1.

Safety metrics are significantly higher when Autopilot is engaged than when it is not.

a. In the fourth quarter of 2022, we recorded one crash for every 4.85 million miles driven when drivers were using Autopilot technology. For drivers not using Autopilot technology, we recorded one crash for every 1.40 million miles driven. To put this in perspective, the most recent data available from NHTSA and FHWA (from 2021) shows that in the United States there was a car crash approximately every 652,000 miles.

b. The data is clear: the more automation technology available to assist the driver, the safer the driver and other road users. The anecdotes in the WaPo article come from plaintiffs' lawyers - cases involving significant driver error - and are no substitute for rigorous analysis and billions of miles of data.

c. More recent data continues this trend and is even more compelling. Autopilot is ~10x safer than the US average and ~5x safer than a Tesla without AP technology. More detailed information will be released in the near future.

2.

Autopilot features, including Traffic-Aware Cruise Control and Autosteer, are SAE Level 2 driver assist systems, meaning that -

a. Whether or not the driver engages Autosteer, the driver remains in control of the vehicle at all times. The driver is made aware of this responsibility, consents, agrees to monitor the assistance and can disengage at any time.

b. Although the driver is responsible for controlling the vehicle, Tesla has a number of additional safety measures in place to monitor that the driver is actively monitoring the vehicle, including torque-based and camera-based monitoring. We have continued to make progress in improving these monitoring systems to reduce misuse.

c. Based on the above and other factors, the data strongly suggests that our customers are significantly safer when they have the choice to decide when it is appropriate to engage Autopilot features. When used correctly, it provides safety benefits on all road types.

The Washington Post uses examples of driver misuse of the Autopilot driver assistance system to suggest that the system is the problem. The article is wrong, misrepresents what's actually alleged in the pending lawsuit, and omits several important facts:

**1.**

Contrary to the Post article, the lawsuit doesn't refer to complacency or the Operational Design Domain.

2.

Instead, the complaint acknowledges the harm caused by driver inattention, misuse and negligence.

3.

Mr Angulo and the parents of Ms Benavides, who was tragically killed in the crash, first sued - and settled with - the Tesla driver before ever pursuing a claim against Tesla.

4.

The Benavides lawsuit alleges that the Tesla driver "carelessly and/or recklessly" "drove through the intersection... disregarding the controlling stop sign and traffic signal".

5.

The Tesla driver didn't blame Tesla, didn't sue Tesla, didn't try to get Tesla to pay on his behalf. He took responsibility.

6.

The Post had the driver's statements to the police and reports that he said he was "cruising". They omit that he also admitted to police, "I expect to be the driver and be responsible for this.

7.

The driver later testified at trial that he knew the autopilot didn't make the car self-driving and that he was the driver, contrary to

the Post and Angulo's claims that he was misled, over-reliant or complacent. He readily and repeatedly admitted:

a. "I was very aware that it was still my responsibility to operate the vehicle safely."

b. He agreed that it was his "responsibility as the driver of the vehicle, even with the autopilot engaged, to drive safely and to be in control of the vehicle at all times".

c. "I would specifically say that I was aware that the car was my responsibility. I haven't read all these statements and passages, but I am aware that the car was my responsibility".

8. The Post also failed to disclose that Autopilot limited the car's speed to 45 mph (the speed limit) based on the type of road, but the driver was pressing the accelerator to maintain 60 mph when he ran the stop sign and caused the crash. The car displayed a warning to the driver that because he was overriding the autopilot with the accelerator, "cruise control will not brake".

More information and background can be found here:
<https://tesla.com/support/autopilot>

Spotlight on our best selling rugs



We take immense pride in presenting a collection of rugs that not only adorn a space but also have become the epitome of luxury, style and craftsmanship.

Vantyghem Projects, Torhoutbaan 1, 8480 Ichtegem
051/582992 0493/704887 info@vantyghem.com



Geef uw exclusieve wagen
de bescherming die hij verdient.



Hillewaere
VERZEKERINGEN

Een **autoverzekering**
even uniek als uw wagen.

Maak nu een afspraak met onze experts:
verzekeringen@hillewaere.be

www.hillewaere.be

MAKE YOUR SPANISH DREAM COME TRUE WITH GLOBAL SPAIN

If you want to buy your dream home in Spain, especially on the Costa Blanca, Costa Calida or Mallorca, then you have come to the right place.

TEXT & PHOTOS: GLOBAL SPAIN



For years, Global Spain has guaranteed professional, quality and above all transparent assistance from A to Z in your own language.

The whole Global Spain family is made up of Belgians who have lost their hearts to Spain and who share their experiences with you with great passion and pleasure.

From the very first meeting, you will feel the conviviality of a family and the informal atmosphere. With great attention to detail, your needs and wishes will be noted and the search for your ideal dream home under the Spanish sun will begin.

Exploring the area together is an important part of the process so that you can get a clear picture of the area and make the best possible choice regarding the most suitable location for your new home in Spain.

Once you have chosen the area that best suits your needs, the next step is to find the perfect property to suit your requirements.

Global Spain is not just about selling, it is about building a circle of friends that will grow over the years. And experience tells us that “word of mouth” is definitely the best form of advertising.







MAR MEDITERRANEO

Your property, our concern” are not just empty words, they are the essence of what Global Spain stands for.

After the purchase of your Spanish property through Global Spain has been completed, the story does not end, on the contrary! It is only then that the client realises how important it is to work with an estate agent who cares about the after sales. 24/24 and 7/7 you can count on a partner who is always ready to help you when you need it.

With offices in Orihuela (inland) and Torrevieja (coast), you can always count on perfect service.



Recently, Global Spain has also started to offer an optimal service in Mallorca, the largest and most beautiful island of the Balearic Islands, through a Flemish-speaking sales manager who is available 24/7 and who has lived in Mallorca for more than 20 years. Take a look at the website to discover the numerous properties and exclusive new developments in Mallorca.

In a nutshell... Global Spain is an accredited Spanish real estate agency, founded and run by Belgian real estate specialists with a very familiar character and one big wish. They want the sun to shine for everyone!

PROFESSIONAL AND TRANSPARENT ASSISTANCE DURING AND AFTER PURCHASE FROM A TO Z

NIE - Translations - Lawyer/Gestor - Notary - Deliveries/ Installations - Site follow-up - Renovations



+34 623 220 132 | +34 865 752 765
 INFO@GLOBAL-SPAIN.COM | WWW.GLOBAL-SPAIN.COM



VERHUUR VAN PHOTOBOOTHS EN LICHTLETTERS

www.partyimpers.be



Trouwfeest



Bedrijfsfeest



Verjaardag



Geboorte



Continental 
The Future in Motion

Het weer heb je niet in
de hand, maar je kan je
er wel op voorbereiden.

De AllSeasonContact 2.



Geschikt voor elektrische auto's

www.continental-banden.be



Ontdek hier meer

model 3

TESLA MODEL 3 (HIGHLAND) TEST DRIVE: MAKING A GOOD FIRST IMPRESSION

TEXT & PHOTOS: CREDIT AND COURTESY TESLA INC

60



I didn't think Tesla could make the interiors of its cars anymore bare, but they've done it. When you enter the new upgraded Model 3, the first thing you notice is that the column stalks for the indicators, wipers, and gear shifter are all gone. Tesla's obsession with minimalist interiors is well documented by now and I can't help but think also a bit unhealthy. Happily, the rest of the updates to this new model are more conventional and bring about significant improvements to the way the Model 3 drives and feels.

The new upgraded Model 3 couldn't have come at a better time. For a time, Tesla was the first brand you'd think of if you wanted to get a sensible electric car. But the competition is now a lot keener. This new model is what the industry would refer to as a facelift. But as far as facelifts go, the changes are quite substantial. **Tesla says around 50% of the parts are new** and are centred on making the car more efficient, quiet, and luxurious.

The changes start on the outside with slimmer headlights and a more aerodynamic front end. I reckon it also makes the Model 3

look more attractive. More importantly, **this shaves the Model 3's drag coefficient from 0.225 down to 0.219**, which, according to Tesla helps improve the Model 3's range by about 10%.

There are big changes in the cabin. **All of the glass featuring double-glazing** (including the huge glass roof that extends all the way to the C-pillar) and new materials help make the cabin feel more expensive and quiet. And since the cabin is generally a quieter place to sit in, the Model 3 comes with **a 17-speaker sound system** as standard. It sounds impressive. I think you need to step up to something like an A8 or S-Class to get a comparative sonic experience in a car.

But there are issues. **The lack of column stalks means you have unconventional ways to indicate** and change gears. Indicating now requires you to push buttons on the steering wheel with your left thumb, which feels very alien to me. Furthermore, because the steering wheel isn't necessarily always pointing straight while you are driving, indicating while turning – say at the Newton Circus roundabout – can be confusing.



Je bent uniek. Maar nooit alleen.

Bij KBC Private Banking ben je goed omringd. Van portefeuillebeheer tot financiële planning, van vastgoed tot verzekeringen. Je private banker zorgt samen met experts voor een vakkundige begeleiding. Zo kunnen we je vermogen uitbouwen en veiligstellen.



www.kbcprivatebanking.be



Private Banking.
Beweegt met je mee.

OPTIEK EVA

Maastrichtersteenweg 224/1 3700 Tongeren

012 21 05 05

www.optiekeva.be

OPTIEK KRISTIEN

Banneuxstraat 4

3500 Hasselt

011 21 55 22

www.optiekkristien.be

BELLE OPTIEK BV

Hemelrijkstraat 10

9051 Sint Denijs Westrem

09 222 05 28

www.belleoptiek.be

OPTIEK D. VLEERACKER

Vijfhoek 12

2800 Mechelen

015 41 45 67

www.optiekvleeracker.be

OPTIVUE

Doorniksestraat 25

8500 Kortrijk

056 25 54 56

www.optivue.be

SERENGETI®

THE MOST ADVANCED EYEWEAR

VALERIA VASI, DESIGNER

24 JOAN - SS577002 II





As for changing gears, that's now done by swiping on the large touchscreen, which also feels very unnatural. The touchscreen can sometimes miss your inputs too, so you might have to swipe more than once. This has the potential to turn three-point turns into slightly anxious affairs.

Tesla doesn't let you change the intensity of the brake regeneration but the feature has been recalibrated to make it easier for drivers to acclimatise and get used to Tesla's vision of one-pedal

driving. Since I left the test drive without feeling any more nauseous than I had before entering the car, the recalibration must have worked.

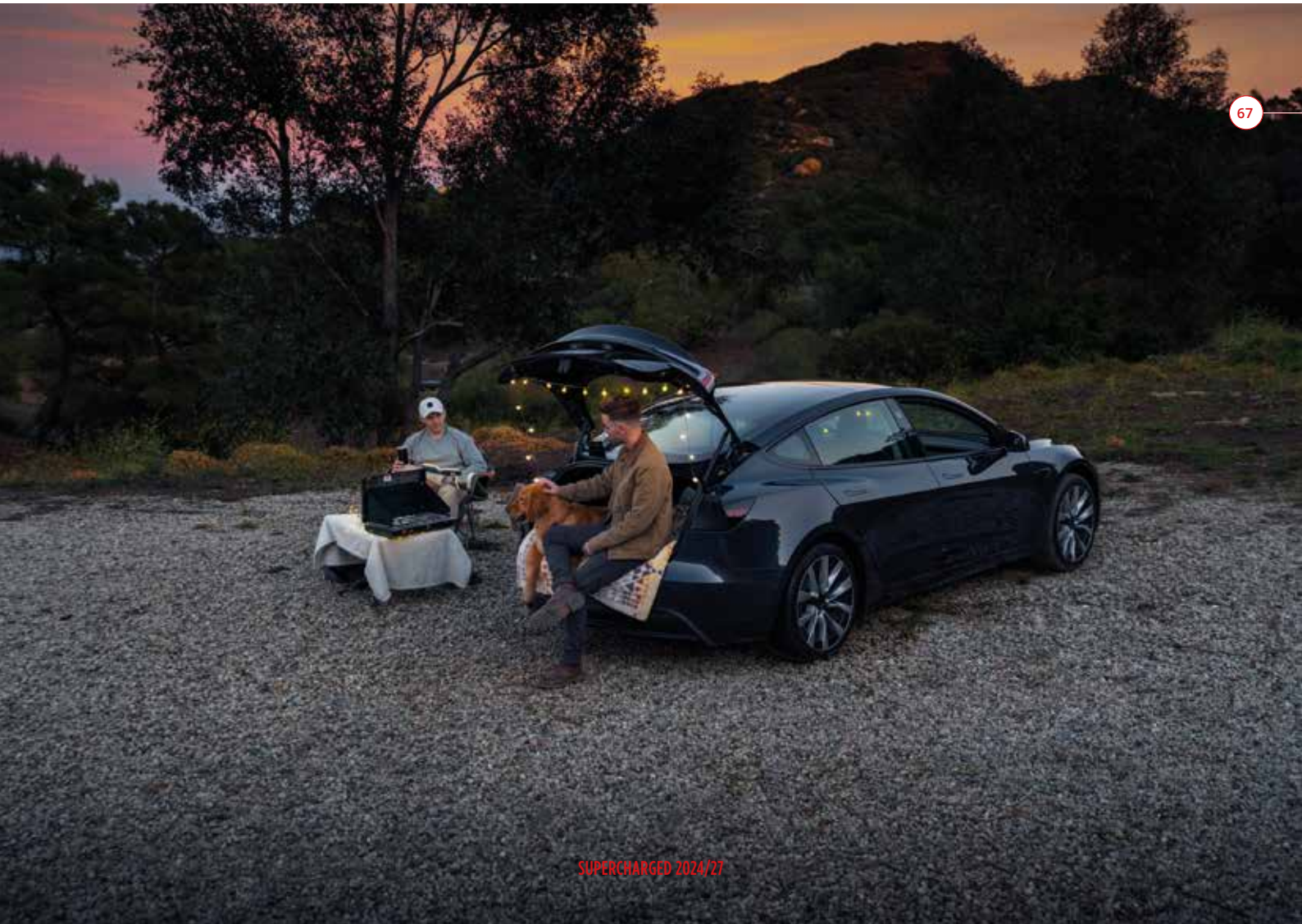
The Model 3 will be sold here in two versions: one standard range and rear-wheel drive, and another long-range version with dual motors and all-wheel drive. I tested the latter. Like most electric cars with high power outputs, it felt very sprightly. I doubt many cars can keep up with it at the traffic lights.

model 3

It's hard to draw any meaningful conclusions about the range on my short test drive, but this was what the trip computer reported: **an energy consumption figure of 14kWh/100km over a 45km test route** that was a 50/50 mix of highway and city driving. Since it has a 75kWh battery pack, owners should be able to easily cover at least 450km on a full charge.

After spending two or so hours in the car, my first impressions were generally positive. There's no question that Tesla has done much

to improve the overall refinement of the car. Wind and tyre noises are well suppressed and the ride appears to be quite good. The interior feels and looks more expensive, although some of its controls continue to frustrate. If you can deal with some of its quirks, I think you'd find a lot to like about the updated Model 3. That said, I need more time with the car to evaluate other aspects like its ride comfort and range, and to get a sense of what it might be like to live with.

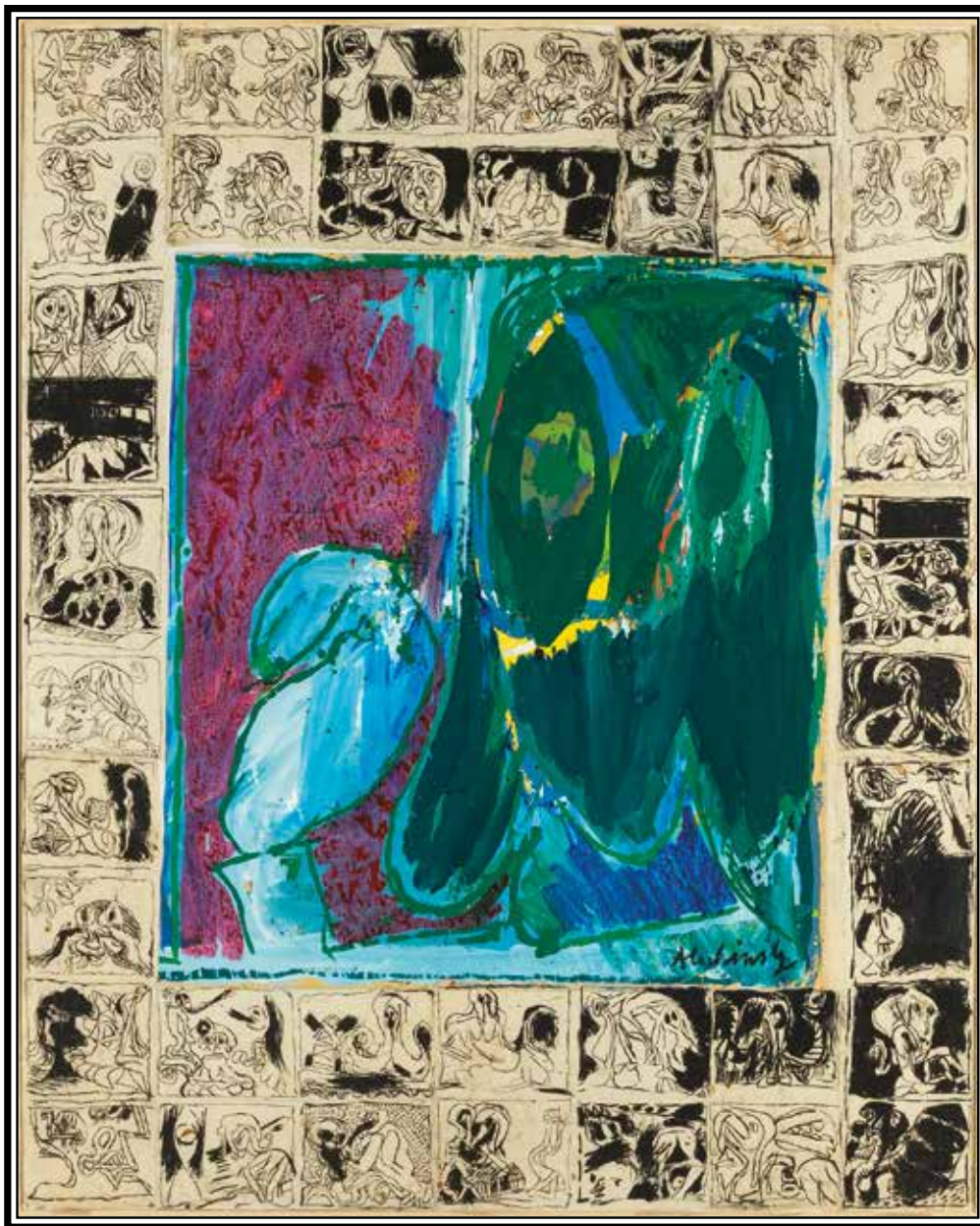


BENT U KLAAR OM UW TWEEDE HUIS TE VINDEN?



Saint Tropez • Cannes • Nice • Ibiza • Parijs
www.livingonthecotedazur.com
Nieuwbouw Cote d'Azur www.wonenaandecotedazur.nl

ALECHINSKY



Fibre Maternelle

162 x 130 cm
1967

Around 1958, Alechinsky's subject matter became more fantastic in nature, and he began using brightly colored acrylics to render comically deformed creatures that often communicate via speech bubbles. The creatures recall Hieronymus Bosch, Pieter Brueghel, and James Ensor—Flemish painters that Alechinsky admires and to whom he sometimes pays homage in his paintings. Since the mid-1960s, Alechinsky has worked primarily on paper. He has returned to his roots as a student in Brussels in his later work that refers to medieval pictorial illustration. From 1983 to 1987 he was a professor of painting at the École nationale supérieure des beaux-arts, Paris. © Guggenheim.org

ALECHINSKY TO ABOUDIA

70

Aboudia blindsides market experts as bestselling artist of 2022

© *The Guardian* 24-09-2023

Artist from Abidjan, Ivory Coast, sold 75 artworks in auction, topping Damien Hirst's 73

Not everyone will know his name, let alone his paintings, yet Aboudia has emerged as the bestselling artist of 2022, based on the number of artworks sold at auction, to the surprise of market experts.

Aboudia, aka Abdoulaye Diarrassouba, 40, whose art is inspired by street culture in his home town of Abidjan in Ivory Coast, heads the Hiscox Artist Top 100, a new survey analysing key trends in contemporary art that will be published on Monday.

Aboudia's work is influenced by the graffiti of Abidjan and the traditional wood carvings of West Africa, and has been compared to the work of Jean-Michel Basquiat, who made his name with graffiti-like images.



Big Business acryl, oil stick on canvas - 150 x 150 cm - 2023

Robinsons Art Gallery

Zeedijk 757A, 8300 Knokke-Zoute
info@robinsons-artgallery.com
www.robinsons-artgallery.com

Openingsuren:
zat. & zon.: 11u - 18u - op afspraak
GSM 0475/27.15.66 - 0477/72.46.89
SUPERCHARGED 2022/24

Elevating places

Als projectontwikkelaar tillen we plekken naar een hoger niveau door in te zetten op duurzame concepten die kleur geven aan de buurt.



ACASA

acasa.be

09 321 03 00

For the love of music

The new Bowers & Wilkins 600 Series is designed for every music lover; it's the attainable, affordable way to experience the joys of True Sound.

Audiomix

Liersesteenweg 321
3130 Begijnendijk
(grens Aarschot)
016 56 10 62
www.audiomix.be

D&M beeld- en klankstudio

Beverestraat 4c
9700 Oudenaarde
055 30 28 05
www.d-en-m.be

Rimbaut Elektro

Aelbrouckstraat 21
9620 Zottegem
09 360 25 58
www.Elektrorimbaut.be

Hifi Corner

Sint-Katelijnevest 53
2000 Antwerpen
03 232 99 50
Paalstraat 128
2900 Schoten
03 658 34 70
Jozef Verbovenlei 54
2100 Deurne
03 322 01 11



Bowers & Wilkins

A golfer wearing a white shirt, red shorts, and a white hat is captured in the middle of a golf swing on a lush green field. The foreground is filled with out-of-focus yellow flowers. The sky is a pale, overcast blue.

Peak Performance[®]

NEW STORE

MARCH 2024

LIPPENSLAAN 102, KNOKKE

EIKENHOF

Duurzaam wonen in het levendige centrum van Kapellen

Energiezuinig en klassevol wonen in één



Op wandelafstand van het centrum van Kapellen, maar te midden van het groen, trekt woonproject Eikenhof volop de kaart van de duurzaamheid.

De luxueuze, lichtrijke BEN-woningen blinken uit in energiezuinigheid, dankzij het gebruik van onder andere zonnepanelen, een centrale warmtepomp voor de vloerverwarming en het sanitair warm water, optimale isolatie ... Het resultaat is een energiepeil van E-20. Dat betekent meteen dat je de eerste 5 jaar geen onroerende voorheffing hoeft te betalen. Zowel de planeet als je bankrekening varen er wel bij!

www.eikenhofkapellen.be



Scan de QR-code en lees alles over dit project

VH

www.vl-holding.be

TREASURED BY LIEN

PIÈCES UNIQUES DIE UITBLINKEN IN ELEGANTIE

Lien was born into a family of jewellers. As she often attended trade fairs, was exposed to the Italian jewellery world and grew up in a prestigious jewellery shop, it is not surprising that she developed a love of jewellery. This interest led her to start designing herself. Purely for herself, to give shape to her passion with tactile jewellery. And this did not go unnoticed. More and more customers approached her and asked her to create bespoke pieces. Because design and craftsmanship from her own workshop, that is the personal touch our customers are looking for. Treasured by Lien was born.

76

TEXT & PHOTOS: JUWELIER VANHOUTTEGHEM

UNIQUE DIAMONDS

Our promise is to create the perfect diamond ring for everyone. Diamond, sapphire, ruby or any other gemstone: it has to be exceptional and match your personality. And that's where Lien puts her heart and soul: in the search for the one, the right gem. A unique specimen that serves as the basis for an exclusive piece of jewellery, crafted entirely by hand in her own workshop.



A NETWORK OF EXPERTS FOR THE HIGHEST QUALITY

Lien's approach is clear: only the best diamonds are considered for the development of her jewellery. A professional and solid network is essential. Thanks to Vanhoutteghem's many years of experience, Lien knows exactly where to look for exceptional materials to create her collection. Her partners know Lien's high standards and travel the world in search of the finest diamonds and gemstones. They know better than anyone how to make the best choices for Treasured by Lien's exceptional creations. The gemstones and diamonds that Lien selects take shape in rings and earrings, pièces uniques that are truly unique in their kind, but also jewels that can be combined as a set.

EACH PIECE IS AN EYE-CATCHER.

For each Treasured by Lien creation, we go to extremes. Lien resolutely chooses special stones that are not easily found in other contemporary collections. Striking coloured stones such as yellow diamonds and morganites are the common thread in her designs. Exceptional and exclusive. They are placed at the centre of the jewellery, which gradually acquires more cachet during the creation process. Lien's high standards of quality and class make Treasured by Lien jewellery instantly recognisable. Her aim is to create jewellery that is timeless and feminine, wearable for every day and every occasion, but at the same time tasteful. A match for every type of woman, style and outfit. She also relies on her artisans in the atelier. Lien designs, executes and creates in consultation with her team. Proud craftspeople who work with the utmost precision to deliver the best end result.



TREASURED
BY LIEN

Every step of the creation process takes place in the Vanhoutteghem studio. Personal, reliable and authentic. Just the way Lien wants her own jewellery collection to be. For her, it goes without saying that every customer receives a detailed explanation of the technical and aesthetic aspects of a piece of jewellery. Service and quality at an exceptionally high level, as you would expect from Vanhoutteghem. Let yourself be surprised by the unique 'Treasured by Lien' collection.



VANHOUTTEGHEM
TIME - BOUTIQUE - JEWELRY
GHENT

**Vanhoutteghem Time & Jewelry,
Dampoortstraat 1-3, 9000 Gent**

**Vanhoutteghem Boutique,
Voldersstraat 6, 9000 Gent**

www.vanhoutteghem.com

VERSTEGEN

Art Galerie

→Meet the artist,
personalized advice!
→Invest in unique pieces of
art by Verstegen, a good idea!

→4 styles,
countless possibilities!

Van Iseghemlaan 115 Oostende

+32479647300

www.verstegen-art.be



Maak jouw vrije tijd
thuis kwalitatief.

SAUNA'S **INFRAROOD**
KLAFS/HETKI INFRAWORLD

JACUZZI'S
HOTSPRING

SWIMSPA'S
ENDLESS POOLS

Maasmechelen WELLNESS

Maasmechelen OUTDOOR

Hasselt

Leuven (Wilsele)

Antwerpen (Wijnegem)

Gent (Sint-Martens-Latem)

Gistel

Eupen

Rijksweg 539 – 089 760 536

Rijksweg 543 – 089 779 855

Herkenrodesingel 35 – 011 230 860

Aarschotsesteenweg 584 – 016 447 034

Vosveld 11a – 038 274 962

Kortrijksesteenweg 200 – 092 314 431

Oostendsebaan 24 – 059 510 392

Industriestraße 38 – 0475 76 14 26

www.gervi.be



[gervigivesyoumore](https://www.facebook.com/gervigivesyoumore)



[gervi_wellness](https://www.instagram.com/gervi_wellness)

GERVI

explore your lifestyle





VLOSSAK
VERHULST



If you can dream it,
we can build it.



EXPERIENCE
THE DIFFERENCE

Moerstraat 53,
2970 's-Gravenwezel
T. +32 3 658 12 50

Elevating luxury living, one villa at a time. From the moment you step through our doors, your dream starts to take shape. Established in 1970, we build further upon 50 years of heritage and craftsmanship. Thanks to our amazing team, building at Vlassak-Verhulst is an experience. An old charm or a new gem. Building, renovating or a readymade home. From design to details. From raw materials to result. From craft to art. We inspire, challenge and bring you closer to your dream. www.vlassakverhulst.com

QUINTA DO LAGO:

A SLICE OF PARADISE IN THE ALGARVE

Quinta do Lago is a unique place, nestled in the Algarve and within the privacy and security of the Ria Formosa Nature Reserve. A beautiful and safe destination with world-class golf, surrounded by award-winning properties, sublime restaurants, a first-class sports centre, boutique hotels and a golden sandy beach. The perfect place to enjoy a rich and happy life amidst the beauty of Portugal's southern coast.

Quinta do Lago is located in the protected area of Ria Formosa, a wetland that is home to a wide variety of waterbirds. As well as the birds, you can see the many crabs and several species of wading birds, such as the avocet and the black stilt.

Quinta do Lago is one of Europe's leading lifestyle destinations. Since its inception in 1972, the resort has been a mix of luxury tourist and residential properties. The ideal pied-à-terre or permanent residence for discerning retirees and holidaymakers.

Located just 20 minutes from Faro Airport, the resort is three times the size of Monaco, but only nine per cent of it is built on. This means that properties are surrounded by greenery and nature. Quinta do Lago boasts numerous luxury leisure facilities and three world-class golf courses, including the South Course, which has been named Europe's best golf course for 2022 following a €7 million upgrade. The resort boasts Europe's only Paul McGinley Golf Academy.

The Campus is one of the finest high performance sports centres in Southern Europe and is popular with international sports professionals. With a fully equipped gym, tennis and paddle courts, swimming pool, bicycles, group and personal training, recreation and sports rehabilitation suites for guests of all ages and levels of play.

Quinta do Lago also offers an abundance of trendy bars, stylish boutiques and sophisticated restaurants. It has become home to a vibrant international community of mainly British, Irish, Dutch and other Northern Europeans, and more recently people from outside the EU, including North Americans, who want to enjoy the best Portugal has to offer in one of the most exclusive locations.

Quinta do Lago therefore offers many attractive benefits in addition to the sunny lifestyle. These include affordable home insurance, property management and community fees, as well as the private and public healthcare systems available in Portugal. But also the low crime rate, political stability and rich culture.





A MODERN BUT SUSTAINABLE RESORT

Significant investment is constantly being made to ensure that the resort meets today's demands, not only in terms of modern comforts, but also in terms of sustainability and the environment. With nature deeply rooted in the resort's DNA, Quinta do Lago is driving golf forward as a strategic project to protect the environment. The renovation of the South Course, one of the three golf courses and the crown jewel of Quinta do Lago, is the resort's most exciting sustainability project.

The much-loved South Course will reopen in 2021 after a €7 million upgrade, which has seen the course equipped with state-of-the-art irrigation systems using renewable resources, a new fleet of electric golf buggies, a planting scheme with native species to increase biodiversity, insect hotels, bee hotels and bird boxes. To increase sustainability, Quinta do Lago works with the Golf Environment Organisation (GEO), a strong global reference, and the local non-profit company VitaNativa.

As a result, Quinta do Lago has already been awarded the Sustainability Award for Resource Efficiency by the International Association of Golf Tour Operators in 2021. The award of Best Golf Course in Portugal in 2021 and the double award of Best Golf Course in Portugal and Europe in 2022 confirm the excellence of the South Course.

QUINTA DO LAGO REAL ESTATE: FROM LUXURY SUITES TO MILLION-DOLLAR VILLAS

Quinta do Lago Real Estate is proud to offer its expertise and guidance in buying and selling resort properties. Quinta do Lago Real Estate, winner of the European Property Awards 2020 and 2021 as the Best Real Estate Agency Single Office in Portugal, provides complete technical, legal and tax advice during the purchase process. Afterwards, Quinta do Lago continues to relieve owners with personalised concierge services, maintenance, landscaping, golf, property management and rental management. Quinta do Lago's coveted villas, apartments and plots are available to discerning buyers who are consciously looking for an investment that will truly change their life and lifestyle. The options range from a luxury suite at the Wyndham Grand Algarve with hotel services to million-dollar villas costing between €9 million and €20 million. All of this in the midst of the resort's many sports, leisure and entertainment facilities, yet in an atmosphere of stylish discretion.

WYNDHAM GRAND ALGARVE: A HOME AWAY FROM HOME

Wyndham Grand Algarve is the newest 5-star hotel in Quinta do Lago and the ultimate destination for sun and relaxation in a coast-

al nature reserve. Whether it's dining Portuguese style, spending time with your family, soaking up the sun, exploring the splendour of the Ria Formosa Natural Park, golfing or relaxing, your time here will be filled with memories to cherish.

The Wyndham Grand Algarve Residences comprise 132 one and two bedroom apartments and three bedroom penthouses, some already owned and some for sale. All are fully equipped and furnished to the highest Wyndham standards. They offer a turnkey solution for investors wishing to benefit from Portugal's sun-kissed lifestyle, combining five-star concierge service with all the modern conveniences expected of contemporary high-end living, ideal for those seeking an optimal return on their investment.

Built in a tranquil and peaceful setting, the hotel comprises only suites, with generously proportioned 1, 2 and 3 bedroom apartments. Guests can enjoy freedom and space with the added comfort of five-star service and amenities. Renovated in 2021, the suites express elegant comfort with a warm, contemporary and luxurious feel.

Each suite has a private outdoor terrace overlooking the landscaped gardens, perfect for enjoying the outdoors. The exceptional design is complemented by the convenience of a separate dressing room, ensuite bathroom, guest toilet and shower room and a fully equipped kitchen with espresso machine and other appliances, practical for extended stays and families. The suites are equipped with an LCD TV, DVD player and kitchen utensils. Complimentary Wi-Fi is available.

The Wyndham Grand Algarve is located 7 km from the city of Faro with its many attractions and 11 km from beautiful Loulé with its famous market, while Vilamoura and Quarteira with their beautiful beaches are also within easy reach. Guests can take advantage of the nearest golf course just a few steps from the hotel. A shuttle service to and from the nearest beach is provided for guests.

As well as a fully equipped gym, the hotel has a Grand Spa with an indoor pool and an exquisite range of personalised therapeutic spa treatments. Enjoy a wonderful massage and relax in the invigorating steam of the sauna.

The Hakuna Matata Club welcomes children from 4 to 12 years old for a host of fun activities. Perfect for some 'me time' for parents.

Enjoy a daily Mediterranean breakfast buffet at Caravela Restaurant, with indoor and outdoor seating overlooking the pool. Start the day with a breakfast of freshly squeezed juices, local seasonal fruit and eggs cooked to your taste. The restaurant overlooks the gardens and serves international and regional cuisine. Guests can choose from a delicious menu of healthy options, salads, pizzas and burgers at the Oasis Pool Bar on the outdoor terrace by the beautiful pool, or listen to live music at the Grand Bar & Lounge Lobby Bar.

From €485,000 (for a one-bedroom apartment), you become an apartment owner and can enjoy your suite for 5 months of the year. The remaining months are rented out, with a 10% return for the owner. The ideal formula for a second stay abroad without worries. No hassle with maintenance, reception and cleaning when renting out. But even as an owner, all you have to do on arrival is unpack your bags and enjoy the beautiful surroundings, the many facilities and the sunshine. For more information visit www.wyndhamgrandalgarveresidences.com.

www.wyndhamgrandalgarve.com

A NEW RESORT IN A PRIME LOCATION WITH GENEROUS INDOOR AND OUTDOOR LIVING SPACES

A brand new property development in Quinta do Lago is One Green Way. A new resort within a resort is being created along the North Course, one of the three prestigious golf courses. The private community of 89 high-end homes has been designed by highly specialised PLAN Architects and award-winning landscape architects Cracknell, with generous indoor and outdoor living spaces. One Green Way seamlessly blends architecture and landscape. Quinta do Lago responds to the trend for luxurious outdoor living.

The sense of tranquillity and privacy is complete in this gated community where villas and apartments are custom designed for a relaxing stay. Each of the 62 apartments and 27 villas is equipped with state-of-the-art design and technology by PLAN Architects, while the outdoor spaces have been designed by award-winning landscape architects Cracknell to fully enjoy the surrounding nature with family and friends. The interiors, designed by Vilaça Interior, combine the natural beauty of quality Portuguese materials with the latest smart home technology. Within walking distance, residents and guests will also find a luxurious range of central facilities and amenities for the One Green Way community.

Each residence at One Green Way is designed for spacious living, entertaining family and friends, working or relaxing. The residences have one or two levels, floor-to-ceiling windows and spacious terraces. Each villa in the Horizon Residences has four to six bedrooms, while the apartments in the Garden and Panorama Residences have three or four bedrooms. The finishes are perfect in form and function and are fully customisable with luxury kitchen, outdoor kitchen and barbecue, home office, lift, cinema room, private gym and spa, wine cellar, golf equipment storage, solar panels, private parking with electric charging stations. Plots range from 380m² to 925m². A home is available from €3.5 million, including the use of the award-winning five-star luxury resort of Quinta do Lago, with a choice of a range of additional bespoke services.

The luxury of One Green Way is further enhanced by the central facilities within walking distance, which include a rooftop lounge bar, clubhouse, spa with sauna, state-of-the-art gym, beauty salon, Trackman Studio golf simulator, owners' lounge and business centre, sustainably landscaped private gardens with heated swimming pools, designer shop, outdoor kitchens and barbecues, dining rooms, on-site restaurant, children's play area and roof terraces with spectacular views. All perfectly designed for entertaining family and friends.

www.quintadolago.com/en/real-estate/one-green-way

Besides this special project, Real Estate Quinta do Lago also unpacks a rich range of super de luxe villas. For every taste and budget. An overview of all this beauty can be found on the real estate agent's site.

www.quintadolago.com/en/real-estate/overview

A JOURNEY THROUGH THE CULINARY DELIGHTS OF QUINTA DO LAGO

Quinta do Lago is known for its high-quality restaurants. The resort offers a variety of dining options for the perfect dining experience. Relaxed or formal, there is something for everyone. Each unique restaurant makes the most of local Mediterranean produce. Fresh seafood from local markets, alongside wood-fired pizzas, healthy salads and homemade desserts. Some of the offerings.

The stylish setting of the Wyndham Grand Algarve is home to the delicious restaurant XXL by Olivier. A bistro-chic concept drawn by Olivier da Costa with a menu that reveals the unity between re-





spect for traditions and restaurateur Olivier's individuality. With his Monkfish Picanha or Lobster steak to lick thumbs and fingers off.

<https://restaurantesolivier.com/xxl-3>

Dining at Casa do Lago is a breath of fresh air. The menu features fresh fish, seafood and seasonal ingredients for delicious, tasty dishes. As you avert your eyes from your plate, you will be enchanted by the breathtaking surroundings. The beautiful blue waters, enjoyed by local seabirds and pedal boaters, perfectly complement the fresh and natural ingredients served at the table. A little further on, the Ria Formosa and the Atlantic Ocean meet.

The dining area, inspired by a nautical design, is tastefully decorated and can be elegantly dressed for weddings and parties. Casa do Lago is the coastal restaurant that invites you to sit back, relax and enjoy the view.

www.quintadolago.com/en/restaurants/casa-do-lago

Raise a toast to the good times at Bovino Steakhouse, where the best steaks, award-winning cocktails, striking décor and a great atmosphere are the ingredients for a memorable evening.

In a unique setting designed by one of Europe's most acclaimed designers, Bovino combines modern interiors with perfectly prepared food for the most exclusive steakhouse experience you can have in the Algarve.

www.quintadolago.com/en/restaurants/bovino-steakhouse

Dano's is a family-friendly sports bar and restaurant in the heart of Quinta do Lago's main multi-sports centre, The Campus. The bar and restaurant was voted Algarve's Best Bar & Restaurant 2020 by LUX Life Magazine.

Step inside the barn-inspired, bright space and you will feel the welcoming atmosphere inviting you to relax and enjoy the moment. The menu is created with the best local, seasonal Portuguese products to ensure freshness and quality on every plate. With its chic-rustic atmosphere, sumptuous décor and vintage sports ornaments with an eye for detail, Dano's is in a class of its own.

www.quintadolago.com/en/restaurants/danos

In Casa Velha, the story of Quinta do Lago began and the first restaurant was born. Over the years, Casa Velha, or 'This Old House' has always remained passionate about food and always strived to provide the ultimate dining experience. This summer, the restaurant opened with a new concept after a total renovation.

You can sample honest food with very traditional Portuguese flavours and characterful wines. Experience the good life in the Algarve with an authentic alfresco dinner on the terrace in an orchard full of fragrant flowering lemon trees.

Your table awaits you, draped in a colourful embroidered Portuguese tablecloth accompanied by a delicious fresh white or robust red wine. Guests are invited to sample a bit of sweet Portuguese life on a plate of traditional and contemporary local delicacies that offer a uniquely fresh take on the flavours of Portuguese home cooking.

www.quintadolago.com/en/restaurants/casa-velha

PURE is the home of healthy, colourful food at Quinta do Lago. Step into the bright and welcoming café and you will see the abundance of fresh and vibrant ingredients available to prepare your meal to order. Start your day with one of the nutritious and balanced breakfast options from the menu, accompanied by a fresh hot cup of coffee or herbal tea and served to your table on the beautiful outdoor patio overlooking the 8th hole of the North Course.

At lunchtime, stop by the juice bar and watch your chosen blend of vitamins and juices being prepared before your eyes, then head to the salad bar where you can choose every ingredient for your perfect lunch. Pure's expert baristas can make your favourite fresh coffee using roasted FreeTrade coffee beans and your choice of dairy or plant-based milk.

www.quintadolago.com/en/restaurants/pure

The latest addition to Quinta do Lago's restaurant portfolio, UMAMI presents the Algarve's most sophisticated Asian dining experience. Inspired by the fishermen of Japan's northern coastal waters, who grill fish on their boats over hot coals and share it with their oars, UMAMI cooks with natural ingredients to create fresh and creative flavour combinations and serves uncompromising quality.

Located in RESERVA's beautiful and luxurious Quinta do Lago, UMAMI is nestled next to the Ria Formosa Natural Park. It is an intimate boutique restaurant with 20 seats inside and up to 60 on the outdoor terrace, including 30 lounge seats, perfectly located to watch the sun set over the waters of the Ria Formosa.

www.quintadolago.com/en/restaurants/umami



BRENG ONS UW OUD GOUD

Wij betalen u uit of we maken een nieuw juweel voor u, helemaal exclusief en gepersonaliseerd.

Maak een afspraak en breng uw oude juwelen mee we kijken samen wat voor u de beste oplossing is. Hergebruik uw oude edelstenen of kies een nieuwe exclusieve steen die u liever ziet!



Voor een belangrijke aankoop, maakt u best een afspraak via sms of tel. 0499.311.393 wij maken graag extra tijd voor u vrij.



WIJ MAKEN HET SPECIAAL VOOR JOU

Juwelenfabrikant in 18kt goud en diamant.
Wij maken juwelen volgens jouw idee of ontwerp,
zelfs met jouw edelstenen of oud goud.
Specialisatie customised juwelen,
verlovingsringen en trouwringen.



B-DIAMOND BRUGGE · JUWELENFABRIKANT · 18KT GOUD EN DIAMANT
rechtstreekse verkoop aan particulier

Wij doen ook op afspraak expertises en waardebeoordelingen voor notarissen,
veilinghuizen en families in het kader van verdeling, successie of verzekeringdossiers.



Exclusief vastgoed
TE KOOP

IMMO **NOBELS**
Wij verkopen ook uw eigendom

Gold



ZWALM



ROYALE VILLA MET ZWEMBAD, SIERVIJVER, POOLHOUSE en dubbele garage te Zwalm. RUIMTELIJK GEVOEL en OPTIMALE LICHTINVAL zijn de troeven binnenshuis.



SCAN ME



OUDENAARDE

LUXUEUZE PASTORIJWONING met een CHARMEVOLLE UITSTRALING waarbij de AUTHENTIEKE ELEMENTEN en de HEDENDAAGSE INRICHTING samen zorgen voor een harmonie.



SCAN ME



RONSE



Exclusieve woning met ART-DECO BOUWSTIJL daterend uit 1940 naar een ontwerp van S. Van Cauwenberghe met een HISTORISCH, UNIEK EN INSTAPKLAAR karakter.



SCAN ME



055 30 92 90



info@nobels.be



www.nobels.be

WEGENS SNELLE VERKOOP
ZIJN WIJ DRINGEND OP ZOEK
NAAR EIGENDOMMEN
TE KOOP.



A Vitra lounge chair and ottoman in a modern interior setting. The chair and ottoman are upholstered in a light-colored, textured fabric with brown leather accents on the seat and backrest. They are positioned in a bright room with large windows overlooking a lush, green landscape. The room is decorated with a white paper lantern, a wooden side table with a small plant, and a large potted plant. The Vitra logo is visible in the top right corner.

vitra.

Lounge Chair & Ottoman in fabric
Charles & Ray Eames, 1956

Staged at the Eames House, Pacific Palisades, California
© Eames Foundation, 2023

GENEVA:

A TOURIST JEWEL

At the invitation of the Geneva Tourist Office, our team had the pleasure of discovering this special city. And what a discovery! Let us share our experiences with you

TEXT: PIETERJAN BOGAERT - PHOTOS: TOURIST OFFICE





EXPLORE THE HISTORIC HEART OF THE CITY

The city is situated on the Rhone. The northern part is devoted to industry, diplomacy, banking and related services. Cross the river to the south, past the fountain, and you will find yourself in the beautiful historic centre of Geneva, which proudly bears the title of 'the world's smallest metropolis'. You can admire its imposing buildings, charming streets and lively squares and discover how a metropolis can still feel like a cosy big village with a French touch.

Once you have soaked up the atmosphere, follow the western shore of the lake for a breathtaking view of the lake with its stately boats and the majestic Alps in the background. If you are staying in the historic centre, take a walk to Parc de La Perle du Lac and then take the ferry over to Parc La Grange. Don't feel like walking? Geneva has an excellent and punctual public transport network.

TRY SOME LOCAL DELICACIES AT THE LIVELY NIGHT MARKET IN CAROUGE.

Are big French villages not your thing? Then Carouge, a small village, is the answer. This charming town just outside the centre of Geneva is a place where tradition comes alive. The night market offers visitors the chance to sample local delicacies while enjoying the cosy atmosphere of this bustling district. An evening stroll through Carouge is a must during your stay in Geneva. Let yourself be surprised by its artistic character while dining in one of the restaurants renowned for their authentic dishes.



LOCAL WINES - BY THE SWISS, FOR THE SWISS

Geneva's local wines are perhaps the city's best kept secret. Unlike other wine-producing regions around the world, these wines are mainly produced for local consumption and are rarely exported. The rural area around Geneva is mainly used for viticulture and is renowned for its excellent white and rosé wines, including the Chasselas grape, which is native to the region. A visit to a local winery is therefore a must during your stay in Geneva. Enjoy delicious tastings while learning about the production process behind these refined wines. Combine this with a relaxing (electric) bike ride through the countryside or hop on the back of a tuktuk to explore the picturesque landscape in a refreshing way.

THE GASTRONOMIC CAPITAL OF SWITZERLAND

Geneva has an impressive array of restaurants to suit all tastes and preferences. And you can take that literally. Switzerland is a confederation of French, German and Italian speakers, each with their own culinary specialities. The result is an interesting mix that literally caters for almost every taste. As a result, a typical Swiss dish is hard to find. In the historic centre of the city, you will find numerous restaurants specialising in local dishes from the various 'language zones', as well as from almost every other continent imaginable. Geneva is home to some of the best, and the prices are fair by Swiss standards for a very tasty meal. If you want to test yourself, the Café des Négociants and Les Trois Verres should be on your list. Two top locations!

Do you prefer sweets? Then the Swiss will spoil you with a wide range of artisanal chocolates. Some say it is the best in the world. Take a look at the Tourism Genève website and navigate to the Choco Pass. There you will discover an arsenal of chocolate shops!

GET THE ROYAL TREATMENT AT GENEVA'S MOST LUXURIOUS HOTELS

When it comes to accommodation, Geneva has something for everyone. The historic centre offers charming boutique hotels where you can enjoy a traditional Swiss atmosphere. These addresses will introduce you to the city's rich history while offering you all the luxury and comfort you need. Along the north-western shore of 'Lac Lemman' you will find beautiful luxury hotels that boast breathtaking views of the lake and the Alps. Here you can relax in sumptuous rooms with modern facilities, while personalised hospitality takes centre stage. Our team recommends that readers stay at the Hotel Longemalle, close to the city centre and local restaurants. The hotel has luxurious, comfortable rooms with excellent showers and a special Lebanese restaurant where you can eat 10 small dishes on the balcony.

IMMERSE YOURSELF IN THE WORLD OF WATCHES IN GENEVA

Geneva is world-renowned for its watchmaking industry, and there is a lot of history behind it. The locals will be happy to tell you how





the best watchmakers, combined with the best jewellers, make the best watches in the world in their home town. Would you rather not hear it from the locals themselves? Then visit one of the many museums dedicated to the history of the city (and watches), the history of Protestantism (and watches), or the history of watches themselves. No one will be surprised: watches are an important part of the city's identity and heritage.

Not satisfied with a simple explanation? Then get to work yourself in a watchmaking workshop. During this unique experience, you will have the opportunity to assemble your own watch in just a few

hours and take it home with you. The price tag? As with any luxury item, 'price on request', but expect to pay three noughts including a top-of-the-range watch.

THE BOTTOM LINE

Geneva has everything you are looking for in a unique destination: breathtaking nature, rich culture, delicious gastronomy and luxurious accommodation. Immerse yourself in this enchanting city and indulge all your senses. A trip to Geneva promises unforgettable moments that will stay with you for a long time. And if you are worried about roaming charges, we have the perfect solution. Switch off your phone, put your watch on hold and enjoy the warmth of the people and the city.



More info: www.geneve.com



CELINE
ROELENS



WWW.CELINEROELENS.COM

Trio & uno ringen roze saffier - € 9.800 - € 4.900 Duo ring tsavoriet - € 3.400 diamant 18Kt roze goud

JUWELEN CELINE ROELENS

Wandel je langs de Sint-Baafskathedraal richting de bruisende winkelstraten in het centrum van Gent, dan is de juwelen designstudio van Celine Roelens bijna niet te missen. Het statige pand op de hoek van de Henegouwenstraat herbergt een verzameling kleine maar unieke kunstwerkjes die een eigen verhaal vertellen en een lust zijn voor het verfijnde oog.



Celine haalt haar inspiratie uit het beeld van sterke vrouwen. Met haar Didi collectie wil ze vrouwen dat extra beetje touch en kracht geven in hun drukke, uitdagende levens.

“Het is zo fijn wanneer een klant precies die kleurencombinatie kan vinden die haar persoonlijkheid nog meer benadrukt,” zegt Celine.

Bij het ontwerpen van haar creaties kiest Celine resoluut voor kleur. In dit proces staan topkwaliteit gekleurde edelstenen en duurzaamheid bovenaan de lijst. Een zoektocht die haar naar de verste uithoeken van de wereld brengt.

Voor de Didi collectie werkt Celine met de onregelmatige dubbele roosvormige slijpvorm van de Madagaskar saffieren en Tanzaniaanse tsavorieten. Wist je dat tsavoriet wel duizend maal zeldzamer is als diamant?



INTENSE kleurstenen





Dé Belgische marktleider
in de meest energiezuinige
woonuitbreidingen.

**willems**

VERANDA'S & WOONUITBREIDINGEN

Ontdek de vele mogelijkheden
in onze exclusieve toonzalen
en op verandawillems.be



Betaalbare
topkwaliteit

ARDOOIE
Oostlaan 4

DENDERHOUTEM (HAALERT)
Atomveldstraat 6

KAMPENHOUT
Haachtsesteenweg 509

MEERHOUT
Molsebaan 47

Contacteer ons op **055 21 85 31** of via verandawillems.be
voor een vrijblijvend bezoek van één van onze
experts en een gratis offerte.

WOONUITBREIDING - TUINKAMER - LEEFVERANDA

PERGOLA - ORANGERIE - POOLHOUSE

DE LEEFVERANDA® IS EEN BESCHERMD MERK VAN WILLEMS VERANDA'S NV

Le Chic Collection. Veined Patterns. Reborn.

#SilestoneLeChic



COSENTINO BELGIUM

Koeweidestraat 44 / 1785 Merchtem
+32 (0)52 21 66 73 / info.be@cosentino.com
Volg ons: [f](#) [@CosentinoBelgium](#)

Ontdek onze showroom:

COSENTINO CITY ANTWERPEN

Kloosterstraat 96
2000 Antwerpen
027897005 / antwerpcity@cosentino.com
Volg ons: [@CosentinoBelgium](#)



Victorian Silver



Versailles Ivory



Romantic Ash



Parisien Bleu



Bohemian Flame



Eclectic Pearl

UNO FORM GENT - HIGH-END SCANDINAVIAN KITCHENS

EXCLUSIVE LUXURY MADE-TO-MEASURE FOR THOSE WITH HIGH DEMANDS

Sint-Martens-Latem has recently become home to a studio of uno form, the Scandinavian kitchen manufacturer renowned for its high-quality kitchens, bathrooms and wardrobes. With a deep-rooted history, a commitment to sophisticated design and a wide range of options, it is not only a studio for kitchen creativity, but also a destination for those seeking sophistication and functionality. The bathroom and kitchen are the most important rooms in the house, so their interiors deserve more than ordinary attention. A Scandinavian kitchen is not only more pleasant to cook and live in. It also instantly adds value to your home. Tailor-made luxury for the discerning.





50 YEARS OF EXPERIENCE

The roots of uno form go back to 1968, when the brand was founded by Danish designer Arne Munch with the vision of designing simple but functional kitchens. The kitchen should become an integral part of the living space. Arne Munch started with a 60 x 60 x 60 cm cube. The square module resulted in an aesthetic but simple piece of furniture that could be easily integrated into the interior. Cabinets, frames and doors all had the same dimensions. This simplified production, logistics, distribution and assembly. The simple design, based on a single shape - uno in Latin - gave the brand its name. Over the years, the designs have evolved. But uno form has always remained true to its Scandinavian heritage: clean lines, timeless aesthetics and functionality as basic principles. Today, uno form is part of the largest European and Swedish kitchen specialist, Nobia.

SCANDINAVIAN LOOK AND FEEL

Stephan Nimmegeers, manager of uno form Gent: "We see that the Scandinavian influence is very popular in our architecture. The minimalist, authentic and timeless designs from Scandinavia are successful in our region and we want to take full advantage of this in our range. The typical Scandinavian shapes, lines, textures and pure colours are reflected in all uno form designs. A combination of luxury, quality, craftsmanship and functionality. Kitchens from uno form are perfectly finished and at the same time exude class and simplicity. They give you a sense of serenity.

STUDIO

In the uno form studio, you are immersed in an atmosphere of quality and luxury. You will find several solutions for kitchens and wardrobes in a homely environment. The kitchen is first and foremost a living space, fully integrated into the home. In the studio you can discover and experience your dream kitchen. You will get inspiration for your interior design, get ideas from stylish furniture, exclusive kitchen appliances and designer taps. In short, you will be introduced to the proud Danish tradition of world-class design.

MADE-TO-MEASURE KITCHENS FOR LIFE

The kitchens are handmade in Farsø, Denmark. It all starts with careful selection of the raw wood. The solid wood drawers are finger-jointed in an authentic carpenter's style and are available in several exclusive wood species such as maple, white ash, oak, smoked oak and walnut. The finished kitchen is a timeless piece of furniture, tailored to your interior and your daily life. An understated and exclusive design with stylish lines and perfect proportions that will last for generations.

FOUR DESIGNS WITH INFINITE POSSIBILITIES

Uno form offers endless possibilities with four different designs. Classic is the original classic series designed by Arne Munch. Classic has a clean look with cubic elements that make full use of space, from the floor to the worktop. The solid wood front frames, drawers and slats are characteristic of the Classic design. The second collection is Avantgarde, where Scandinavian nature is brought indoors. There is a choice of lacquered surfaces and hand-selected veneers to give the kitchen exactly the look you want. The Shaker represents everything Scandinavian design is known for: timeless quality,



craftsmanship and simplicity. It is a contemporary style that can be used to create modern spaces. The fourth design is Copenhagen, with razor-sharp aesthetics and uncompromising craftsmanship. Here the highest standards of material selection and functionality have been set, suitable for today but also for 30 years from now. Within each design range you can choose from countless combinations of wood species, laminates, lacquer colours and different worktop materials.

PERSONAL ADVICE AND SUPPORT

When you choose uno form for your kitchen, you get more than a design and a perfect finish. You get the kitchen of your dreams, one that reflects your personality and your lifestyle. Stephan Nimmegeers: "We do everything in-house, we give personal advice, we provide individual guidance and we do the installation ourselves. We take a lot of time during the first contact to listen carefully to the customer's wishes. We want to know what the room looks like, what materials they prefer, what style and de-



sign range they prefer. This initial discussion forms the basis of the first design. This is followed by a visit to the customer's home to take measurements and get a clear idea of the possibilities. Based on all this information, we adapt the design and create a digital representation. Once the customer is happy with the quote, we get to work. We follow the timetable ourselves". Uno form offers professional installation with its own staff under the direction of the managing director. Uno form does not use sub-contractors.

PARTNERS AND TOP BRANDS

Uno form collaborates with leading partners. Stephan Nimmegeers: "In our kitchens you will find the best appliances with the latest technology and exclusive design. We offer a wide range of taps, lighting, hobs, steam ovens, refrigerators, freezers, extractor hoods and wine cabinets. This includes partners such as Gaggenau, BORA, Miele, V-ZUG and Liebherr. All state-of-the-art, top-quality brands with charisma. We also work closely with top Danish designer Carl Hansen on the furniture.

NEW STORE IN SINT-MARTENS-LATEM

You can now visit the uno form studio in Sint-Martens-Latem. Stephan Nimmegeers: "We chose a prime location on the Xavier de Cocklaan because this prestigious location is a real luxury retail hot-spot. We invite people to come and visit our brand new premises, where our exclusive Danish kitchens will be on display.

UNO FORM GENT

Xavier de Cocklaan 87 Bus 1
9830 Sint-Martens-Latem
More information: www.unoform.be



A woman with long red hair is sitting on a white bed in a bright room with large arched windows. She is wearing a light-colored outfit and is reading a magazine. The room has a modern, minimalist aesthetic with a white bed, a white rug, and a floor lamp. The windows are large and arched, letting in a lot of natural light.

Auping Auronde

Al 50 jaar een designklassieker

Auping Store Brugge
Smedenstraat 52
www.aupingstore-brugge.be

Auping Store Knokke
Lippenslaan 92
www.aupingstore-knokke.be

Auping Store Sint-Martens-Latem
Kortrijksesteenweg 37
www.aupingstore-sintmartenslatem.be

auping
store

Je grijpt nooit mis
met deze greeploze
koelkast.



Een klopsignaal, een gesproken opdracht of de SmartDevice-app is voldoende om de deur volledig automatisch te openen. Liebherr-apparaten met AutoDoor maken de greeploze keuken pas echt compleet. En sluiten? Dat kan met de hand maar ook geheel automatisch.

Ontdek onze modellen met AutoDoor op [liebherr.be/autodoor](https://www.liebherr.be/autodoor)

Kwaliteit - Made in Germany.

LIEBHERR



Sommigen zien
misschien hun ouderlijk huis.

Wij zien dat, dankzij
een geoptimaliseerde
vermogensplanning, dit huis
in de familie kan blijven.

Sommige cliënten profiteren nu al van deskundig advies
over successieplanning door onze specialisten. En u?

Deutsche Bank. De bank voor uw beleggingen.



Economisch en ecologisch in verbruik

Italiaans vakmanschap

Fontana "pizza"-ovens zijn "veelkunnners"

- 100% made in Italy met 50-jarige expertise in houtgestookte inox-ovens voor Outdoor Cooking.
- Het ruimste assortiment: ook gas én Hybride. Tal van formaten.
- Vanaf 949,00 voor 40x40cm bakoppervlak. Uw beste koop voor jarenlang plezier.

Antwerpsesteenweg 91 te 9080 LOCHRISTI
www.vandella.be en info@vandella.be

 **Vandella**
Een passie voor buitenmeubilair

MULTUM ACCOUNTANTS

PROACTIVE ACCOUNTING FOR INDIVIDUALS AND THE BUSINESS OF THE FUTURE

Multum is a well-known all-round accountancy firm in Wetteren, offering a wide range of services and expertise for every taxpayer and entrepreneur. You can come to Multum for your bookkeeping or your tax return, for professional advice with a personal approach. You also get much more than a typical accountancy firm. Multum helps and advises clients with the important decisions they make in running their business and also in realising their dreams. This includes advice on inheritance planning or even help with buying a second home. With extensive experience in a wide range of sectors, Multum can add real value to your business by acting as a trusted advisor on tax, accounting, company law and other financial matters. The office is also surrounded by a network of knowledge specialists.

106

TEXT: DOMINIEK SAELENS

PHOTOS: MULTUM ACCOUNTANTS



MUCH MORE THAN ACCOUNTING AND TAX

The accountancy firm was founded almost 40 years ago as 'Fiduro' and has gone through quite an evolution since then. The name change came in 2016, when the firm moved from Kalken to brand new premises in Wetteren. Danny De Winter, director and partner of Multum: "Multum means 'variety' and 'diversity'. We offer our clients much more than accountancy and taxation. They can rely on us for a wide range of services and advice. We help them with the complex regulations, we provide guidance, we think along with the client to find the best solution for them. We have now grown into a team of 30 people who give their best every day. They are all specialists in their field. Multum is a medium-sized accountancy firm with three partners: Danny De Winter and An Verkest, directors and tax advisors, and Marc De Cock, chartered accountant and tax advisor.

DIVERSE SERVICES AND ASSIGNMENTS

Multum provides accounting advice to individuals, sole traders and companies. This usually involves taking care of tax, accounting and company law obligations. This includes assistance with personal and corporate tax returns in the areas of taxation and VAT. But also assistance with general accounting, such as the preparation of annual accounts, financial analysis or assistance with loan applications and investment projects. Multum offers advice on contracts in the field of corporate and commercial law, bankruptcy law or mediation in shareholder disputes. A recurring task is to assist clients in setting up a company and preparing a financial plan. Multum offers significant added value in all individual assignments in the form of personal advice or interpretation of figures and data.

VALUATION AND ACQUISITION SUPPORT

The services offered show that Multum is not your average accountancy firm. Over the years, Multum has also specialised in business valuations and guiding mergers and acquisitions processes. Danny De Winter: "We are increasingly being asked by other firms to carry out valuations of their clients' companies and to guide them through the acquisition process. Based on the accounts, we diagnose the company's figures, creditworthiness and profitability. However, determining the value of a company requires a certain amount of specific knowledge, both financial and legal. This is why accountancy firms outsource this task to us, because they know that we have the necessary experience and know-how in this area. We believe it is extremely important

that clients are well advised and guided. We provide intensive and personal support throughout the process. Because be honest. You only get one chance to sell your business. Or to acquire the right company. And this process needs to be prepared and managed in the best possible way. To do this, we have people who have worked for the Big Four, the world's four largest accounting and consulting firms. They specialise in taxation and are supported by our in-house lawyer for the legal aspects of the issues. Within this framework, we offer companies and organisations a range of services, from auditing financial statements and accounting records to advising on restructuring, management decisions and legal matters".

2026 - THE YEAR OF DIGITAL INVOICING

One area of focus that is not yet on the radar of many business owners is the impending requirement for every company to adopt digital inter-company invoicing from 1 January 2026. This means that every business will have to make its inter-company invoicing completely digital. An Verkest, director and partner of Multum: "We try to make our clients aware that they need to



prepare for the future digitalisation of their accounting workflow. Within a few years, they will be forced to switch to software where invoicing is fully automated. It will no longer be necessary to email invoices and payment receipts in PDF format to the accountant. All financial information will be sent instantaneously and digitally to the accountant and the government in an encrypted file. We will educate and guide our clients in the use of the new applications, as digitalisation will require some adaptation of the work process. We will also help our clients to interpret the figures and statements that will be easier to present through these digital applications. It is important for every

entrepreneur to know his own financial situation and to help think along with the accountant to make things more optimal”.

PROPERTY TAXATION

Multum also offer expert advice and share their knowledge on property taxation. Danny De Winter: “We find that many of our clients need advice on the acquisition and management of property. We are happy to give them our sound information because we have both feet firmly on the ground of tax reality. Almost everyone is faced with the tax implications of property sooner or later in life. We are also happy to help people who, for example, have a second





MORE INFORMATION:

www.multum.be
 Multum Accountants BV
 Brusselsesteenweg 415
 9320 Wetteren
info@multum.be

home or are thinking of buying one. We help clients decide how best to structure their property investments, whether in their personal ownership, in a company or in a succession plan with their children or grandchildren. These are usually long-term investments with significant financial scope, where you don't make decisions overnight".

COMPLEX LEGISLATION

Multum helps clients by giving them the right advice and proactively finding a way through the tangle of complex legislation. Danny De Winter: "The government is shifting more and more administrative tasks to offices, much more so than in recent years. Taxation is getting more complex every year. We have to constantly retrain to keep up to date, as legislation is constantly changing and evolving. It is obvious that individuals and business owners do not have the time to keep up with every tax, accounting and legal change. That is why we inform our clients personally and proactively about everything that is relevant to their situation. For example, which investments make the most sense from a tax perspective. We formulate the best and most personalised advice for each individual or self-employed person. All our clients receive the full attention of our staff, regardless of their specific case or the size of their business. We ensure that entrepreneurs can concentrate fully on their core business - running their business.

PROACTIVE AND SOLUTION-ORIENTED THINKING

Every business owner should make time in their busy schedules to look at the numbers, analyse their own financial situation and take action. Too often, the self-employed leave this to the accountant. An Verkest: "At Multum, we want to encourage our clients to think proactively. It is important to analyse business results frequently. In certain cases, the figures may be confrontational, requiring an adjustment or a solution. In this case, valuable time can usually be saved. However, the entrepreneur's own input and reflection can be very valuable in these matters. We encourage our clients to do this. In recent years, we have noticed that young entrepreneurs are more meticulous about their figures than previous generations of entrepreneurs. Young people have their finger on the pulse when it comes to numbers and are more proactive in pursuing results. This solution-oriented approach is well received by our clients and, most importantly, delivers great results. That's what we do it all for, isn't it?

UNIQUE BIKES AT E-MOTIONBIKES

YOU EXPERIENCE A “WOW” FEELING

The story of the e-bike shop E-motionbikes is a special one. Two bike enthusiasts discovered the Ruff-Cycles and Ellio brands. They were so enthusiastic that they started their own business. The bikes are handmade, top quality and eye-catching.

TEXT: HILDE PAUWELS - PHOTOS: E-MOTIONBIKES

The name E-motion has a multilayered meaning. The E stands for electric and motion for movement. But for owners Ann Neuts and Ludo Guisson, it also stands for a special emotion and experience. “When you ride our bikes, you get a wow feeling. It’s a passion for us. We loved cycling, and almost every weekend we would go out on a normal bike. We noticed that other cyclists could easily overtake us because they were electric. That made us curious.

CHOOSING SUSTAINABILITY

Ludo is a keen Harley rider. Together with Ann, he started looking for a high-quality e-bike, preferably one with a special cachet. They did not want a mass-produced bike that would be unusable after a few years, but a quality, durable bike. “We ended up at Ruff-Cycles, a manufacturer based in Regensburg, Germany. We knew right away that this was the bike for us. We did a lot of research into their technical aspects. At the time, we hadn’t thought of starting a bicycle business, as we both work in the IT sector. But we were surprised to find that there were hardly any dealers of this top brand with expertise in the area. That was the trigger, we contacted the manufacturer. After thorough discussions, we reached an agreement for the dealership in Flemish Brabant and Limburg. That was the start of E-motionbikes about three years ago. We recently received the news that we are the largest dealer in Belgium.

STRONG IN MAINTENANCE

“Both our grandparents were bicycle dealers, so it’s probably in our DNA.

Ann’s grandfather ran the well-known Velos Jozef Neuts bicycle shop in Diest. She now lives in her grandparents’ house, where the bicycle shop was located. Ludo’s great-grandfather ran the first bicycle shop and garage Claes in Heusden-Zolder.

Ludo Guisson: “As a child, I often ran around my grandfather’s shop, dismantling and reassembling bicycles. Of course, maintaining bicycles today is completely different. I took a course in bike repair to learn more about it. At the moment I am still training on e-scooters, e-steps and speed pedelecs, with a focus on electronics. Meanwhile, Ruff-Cycles itself sends customers from bicycle dealers in the Netherlands and Wallonia for specialised maintenance. The company uses quality parts, all of which are European. Only the Lil-Buddy is equipped with Shimano gears. A special feature is the continuously variable belt drive, which is custom-made. That means you have to watch how it is adjusted with precision. Everything has to be measured very precisely. It has to be right from the start, otherwise there will be problems later. Ruff-Cycles is a young company that is growing fast. It is reassuring for them that we can take care of the maintenance. This avoids the delicate return transport to Germany”.



FLAGSHIP THE RUFFIAN

E-motionbikes stocks all the models from Ruff-Cycles: Biggie, Lil'Buddy, Lil'Missy and The Ruffian. "We specialise in The Ruffian, the flagship of Ruff-Cycles. It is a bike with a great retro look and a very nice riding experience. It is very distinctive, it almost feels like a motorbike. We sell this model mainly to customers who want something special. So the Ruffian is unique. The bike is handmade, which is rare. That has added value, it turns out. With regular manufacturers, a new model comes out every year. The Ruffian has been around for ten years, unchanged. So the bike keeps its value.

COLLECTOR'S ITEM

Customers can choose from seven colours for The Ruffian. The Ruffian sometimes becomes a collector's item, especially when a particular colour disappears from the range. "If the customer wants a different colour, this is possible at an extra charge. A customised bike with a company logo, for example, is also possible. This can be an eye-catcher in the office or at a trade fair. Every year a limited edition of The Ruffian or Lil'Buddy is released in collaboration with an international VIP. Last year it was Paul Jr. Designs, who customises Harleys for his clients. He was allowed to unleash his design on The Ruffian. Fifty certified copies were produced. Paul Jr. personally put his signature on it, so each bike is unique. E-motionbikes was able to sell three of the fifty, something we are proud of".

SPEED PEDELECS FROM ELLIO

Ellio is a Belgian brand that specialises in speed pedelecs. "We were convinced by their quality and technical competence. We were able to test the bikes and were amazed by the performance and quality. Ellio speed pedelecs have a two-wheel drive system inspired by the drive technology of a car. They are fully automatic. E-motionbikes sells the Ellio Original and the new MAX. The powerful motors ensure effortless acceleration, while the all-wheel drive system provides optimum traction and stability at speeds of up to 45 km/h. The Original and the MAX are available in sporty and comfortable versions.

SOLID SERVICE

"You don't buy a bike lightly. We spend a lot of time talking to our customers over a cup of coffee. We are open and honest about the bikes and give information about the pros and cons. We are also very accessible, even on Sundays and public holidays we pick up the phone if possible". Customers can request a test ride.

You can also hire a Lil'Buddy e-bike, with or without a guide. Ann is a city guide and leads bike tours in Diest. "Customers who can rent a bike through their employer also find their way to us," she says. In fact, E-motionbikes is a partner of Cyclis, Lease a bike, O2O, B2Bike, VDW Lease and Joule for bike leasing.

Information: <https://e-motionbikes.be>

FROCK

GALLERY

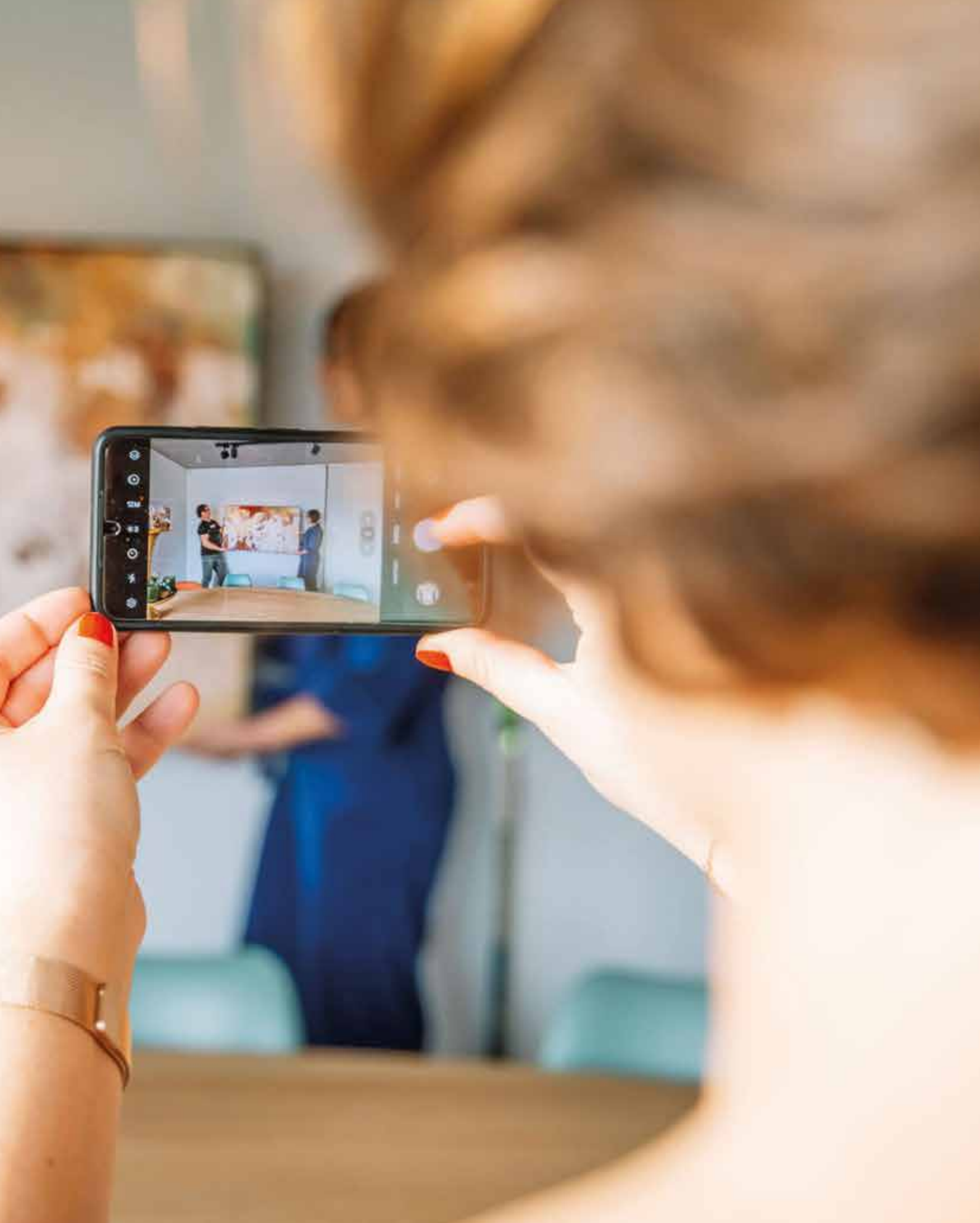
Probeer een gratis en
vrijblijvende presentatie
bij jou thuis!



Creëer een intieme galerie-ervaring bij je thuis - samen met familie en vrienden. Levering, installatie en advies zijn gratis in de Benelux en Noord-Frankrijk. We streven naar een leuke en plezierige ervaring zonder nadruk op verkoop - geen druk! Bekijk onze volledige voorraad in onze online shop. Neem contact met ons op voor meer informatie en boek vandaag nog jouw exclusieve kunstervaring!

frockgallery.com

FROCK GALLERY
Rijselstraat 26
8900 Ieper



CONGRESS LAADINFRA 2024 MAPS OUT EV SECTOR

“WE ARE ONLY AT THE BEGINNING
OF MAJOR CHALLENGES”

Electrification is happening fast, which is positive. The challenges are huge, such as providing sufficient charging infrastructure with quality service and investing in grid capacity. What is the priority: increasing the range of cars or fast charging? Electrification of heavy transport is also on the rise. The use of renewable energy sources is on the rise and several projects are in the pipeline. All this could be heard at the Laadinfra 2024 conference held in Brussels on 18 January. It was organised by the Promedia Group.

TEXT & PHOTOS: HILDE PAUWELS



How should we ensure that the supply of charging stations can increase, and what are the challenges? This was the key question at the second Laadinfra '24 congress, which took place in Brussels on 18 January. Some 25 speakers from the sector presented the projects they are focusing on. In total there were more than 250 participants. It was a diverse group, including network operators, charging infrastructure providers, fleet owners, the government, consultants and researchers from Belgium and the Netherlands.

EV: EXPONENTIAL GROWTH

Several speakers pointed out that electric driving is currently gaining momentum, but also that this is only the beginning of a very rapid increase. This is positive, as the EV sector is essential to meeting climate change targets. The EU has established the European Green Deal. Europe wants to be a climate neutral continent by 2050. By 2030, greenhouse gas emissions must be reduced by 55% compared to 1990. These are ambitious targets.

The figures speak for themselves. On 1 August 2023, there will be 6,030,700 passenger cars in Belgium. This is according to Statbel, the Belgian statistical office. The number of pure electric cars has almost doubled in one year, with an increase of 93.6%. In 2022, there will be 71,651 electric cars; in 2023, this number will rise to 138,749. It is important to note that 80.8% of these electric cars are registered in the name of a company. Although electric cars are becoming increasingly popular in Belgium, only 26,440 cars (19.1%) are owned by individuals and 112,056 by companies.

At the beginning of 2024, there will be 39,520 'slow' AC charging points and 2,068 'fast' charging points in Belgium. This compares to 146,572 and 3,651 respectively in the Netherlands. On average, there are 165 cars per charging point in Belgium, 66 in the Netherlands, 465 in Germany and 392 in France. One of the biggest challenges for politicians, entrepreneurs and researchers in different European countries is to get the charging infrastructure right.

STRENGTHENING THE PRIVATE MARKET

Marc Vandenberg, COO Lease Belux, Van Mossel Automotive Groep, took stock of the situation. Van Mossel Automotive Groep is the largest automotive company in the Benelux and is celebrating its 75th anniversary this year. It has 6,600 employees and is active in seven countries. The company has 119,000 leased vehicles of 43 different brands in circulation. Of these, 40,000 are plug-in vehicles.

Marc Vandenberg: "Our ecosystem consists of trying to relieve our customers as much as possible through our dealers, our body shops and the leasing companies, better known as DirectLease, J&T Autolease, Van Mossel Autolease and Van Mossel Westlease. In Belgium, we are well on the way to zero-emission mobility. Development is progressing rapidly, with the number of electric vehicles doubling every year. Most of them are in company fleets. It is therefore important to involve the private market more".

MORE INCENTIVES NEEDED

Marc Vandenberg: "In terms of range, we are pretty good. Most models have a range of between 300 and 600 km WLTP. Belgians drive an average of 60 km a day. You should be able to charge at home, at the office, in public or on the road. Taxation is good for companies, but there are no incentives for individuals, which is a shame. Our advice to the government is to look at neighbouring countries. Sometimes there are simple measures that work, such as being able to use bus lanes, free parking or dealing with the charging pole stickers that are sometimes a problem". There are big differences across Europe, including in Belgium. Wallonia is lagging behind. Political decisions play a role. About 10 years ago, the Dutch government gave a lot of subsidies, which led to a rapid increase in the number of hybrid cars. So when a local government recognises the importance and gives incentives, it has an impact.

TOP PRIORITIES MOBIA

Marc Vandenberg: "The Belgian government has introduced a bonus, but much more needs to be done. For example, there



BELGISCH FAMILIEBEDRIJF

Ostyn is een rasecht Belgisch familiebedrijf dat in 1992 opgericht werd door Yvan Ostyn onder de toenmalige naam Veranclassic. In 2015 nam zijn oudste zoon Thomas het roer over en sinds 2021 is Laurens, zijn jongste zoon, ook actief in het bedrijf. Om het 30-jarige bestaan van de firma te vieren, werd in 2022 gekozen om de naam van het bedrijf te veranderen van Veranclassic naar Ostyn om zo het familiale karakter extra in de verf te zetten.

Ostyn, de nieuwe naam van Veranclassic, is sinds 1992 gespecialiseerd in de verkoop, productie, levering, plaatsing en nazorg van kwalitatief hoogstaande en op maat gemaakte poolhouses, woonuitbreidingen, terrasoverkappingen, carports, garages, cottages, tuinhuizen en andere exclusieve bijgebouwen.

Wilt u graag inspiratie opdoen, professioneel advies inwinnen of een gratis offerte met 3D-ontwerp ontvangen voor uw droomproject? Bezoek dan 7 dagen op 7, ook op zon- en feestdagen, de overdekte showroom van Ostyn te Dottenijs, waar u op een oppervlakte van 3.000 m² tientallen creaties kan bewonderen.

U kan ook terecht op de website ostyn.be, waar u de prachtige inspiratiebrochure kan downloaden en een vrijblijvende afspraak kan maken voor een gratis offerte.

Ostyn Home & Outdoor Extensions

Jacquetboslaan 1 | B-7711 Dottenijs
+32 (0)56 84 38 48 | info@ostyn.be | ostyn.be



ostyn[®]

HOME & OUTDOOR
EXTENSIONS



let's **expand** your freedom





Audiomix | Liersesteenweg 321 | 3130 Begijnendijk (grens Aarschot) | 016 56 10 62 | www.audiomix.be
Beeld, Klank & Koffie Verheeken | Sint-Gillisstraat 22 | 9170 De Klinge | 03 770 73 48 | www.verheeken.be
D&M beeld- en klankstudio | Beverestraat 4C | 9700 Oudenaarde | 055 30 28 05 | www.d-en-m.be
di Monaco | Stationsstraat 66 | 9100 Sint-Niklaas | 03 776 24 40 | www.dimonaco.be
Hifi Corner | Jozef Verbovenlei 54 | 2100 Deurne | 03 322 01 11 | www.hificorner.be
Heyman | Krijgsbaan 209 | 9140 Temse | 03 771 11 86 | www.heymanreference.be
Loewe Gallery Opwijk | Steenweg op Dendermonde 44 | 1745 Opwijk | 052 35 62 50 | www.loeweopwijk.be
Rimbaut | Van Aelbrouckstraat 21 | 9620 Zottegem | 09 360 25 58 | www.elektrorimbaut.be



The new Loewe iconic

A sculpture for your eyes and ears.



LOEWE.



Gerben van den Berg Wathub

will be a ban on diesel and petrol cars in Brussels and Antwerp between 2030 and 2035. Numerous measures are described in Mobia's "Mobility Memorandum". The mobility associations FEBIAC, RENTA and TRAXIO form an alliance called Mobia. Last year, they drew up a memorandum to the political world to tackle the challenges of mobility together. Key priorities include modernising taxation for affordable zero-emission mobility, pulling out all the stops to recharge the vehicle fleet and preparing the mobility sector for the jobs of tomorrow. These priorities are further elaborated in 25 themes and 101 policy recommendations.

OCCASIONS: STABLE PRICES NEEDED

The Van Mossel Automotive Group is a leasing company.
Marc Vandenberg: "On the leasing market today there is a sufficient supply of cars. There will be 78 new models in the next five years, including vehicles with a catalogue value of less than 25,000 euros. On the used car market, too, the supply of electric cars is increasing. We see strong price pressure. The lead time to sell a car is quite long. Our message is to work on stable prices. Sometimes models are launched without a discount, then with a 5% discount, then with a 10% discount. The catalogue value then drops very quickly and that is harmful for the used market."

LEASING: FINANCING IS DIFFICULT

Financing is sometimes a problem for leasing companies. **Marc Vandenberg:** "The cost price is another problem, an electric car is on average 15,000 euros more expensive than a diesel car. We are registering 10,000 cars a year and that has to be financed. We need an extra 150 million euros to finance the same fleet. Consider also the individual who finances his car through the bank. The monthly repayments weigh heavily because of the high interest rates."

FLEET MAINTENANCE

Marc Vandenberg: "Our experience shows that maintenance costs are on average 25% lower because there is no oil change, no exhaust system. For tyres, we see the opposite, consumption is 15% higher due to the higher weight of the car. For the insurance industry, there is also the challenge of the average cost of claims, which is significantly higher due to the price of spare parts and the need for specialised personnel. Replacing a battery is expensive. Even if you can replace modules, the sums remain high. It would be nice if battery cells could be repaired, but I expect the insurance and leasing industry to increase premiums by 25-40% in the coming years".

VAN MOSSEL ENERGY: CHARGING SOLUTIONS

Marc Vandenberg: "As a leasing company, it is also our job to provide the charging infrastructure. It is not a mature market yet, there are a lot of teething problems. That is why we are taking a

proactive approach. We are working with an external partner, but that has some drawbacks. The dependency is too high, we have no control over the partner's subcontractors (the installers), in case of problems we are referred to each other, it is not flexible because charging solutions cannot be transferred. In short, we cannot relieve our customers as we would like. So my advice is to go for an open system. These difficulties were the reason for setting up Van Mossel Energy. This means that we will offer our own CPO and eMSP services. We will look for our own installation partners, which will be at least two. We will market the charging stations ourselves. We will also have our own team for consultancy, administration and commercial management. The focus is on customer satisfaction, quality, good data management, fewer intermediaries and more flexibility". Several speakers mentioned the need to improve service. Not all chargers are equally accessible and you can only use them with certain apps and passes. That has to go. Charging points are often not well laid out. You should be able to have a coffee and check your email while you charge, not wait in a drafty corner in the rain for your car to charge.

STRONGER COMMITMENT TO HOME CHARGING

ABB E-mobility is a world leader in electric vehicle charging with the highest uptime and the largest number of DC fast chargers on the market. Its vertically integrated offering includes the broadest portfolio of AC and DC charging hardware, a range of digital services and advanced energy and fleet management solutions. Through critical cloud-based connectivity, the company is able to provide 24/7 remote monitoring and diagnostics.

Leon van de Pas, Senior Vice President Home Charging, ABB E-mobility: "Last year we produced our millionth AC charger, we have 12 installation partners and operate in 85 countries worldwide. In terms of hardware, the Terra AC Wallbox is a top performer. It is reliable, high quality, there are many possible applications, it is a safe system and you can integrate your own label. We also have more than 13 years of experience in DC fast chargers."

MORE FOCUS ON SOFTWARE

ABB E-mobility has a software development centre in Belgium. Leon van de Pas: "We see a strong trend. Hardware used to be a big issue, but now we see more focus on software. In recent years, more and more options have been introduced, such as an EV driver app, an installer app, a management platform, connectivity. A big challenge is the service around the charging infrastructure. That is why we offer a total solution. We have a network of installers for companies, we provide a well-functioning operational system, there are logistics options. We offer a wide range of services to our customers. It is not easy to choose the right charging options for your home. Information and support

**Stel je voor, de Tesla
Mobile Connector**

MET DAARBIJ

- De Tesla Wall Connector
- Slimme laadfuncties
- Split Billing
- Sturingsmogelijkheid via EMS systemen
- De handige Tesla knop
- Levenslange garantie*
- Opladen met zonnepanelen

EN BOVENDIEN ZONDER

- Moeilijke installatie
- Netwerkkabel te trekken
- Hoge kosten

Dat is de nieuwe ETAPpro voor Tesla!

Beschikbaar vanaf **€ 939 incl BTW**



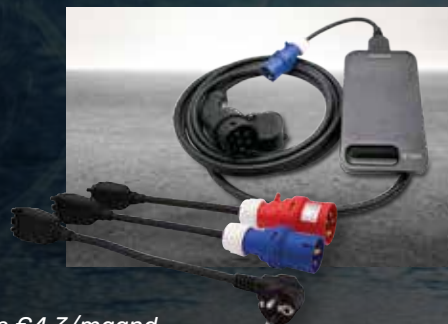
Proudly made
in Belgium



*De mobiele lader in
de muurbeugel*



*De mobiele lader met
verwisselbare stekkers*

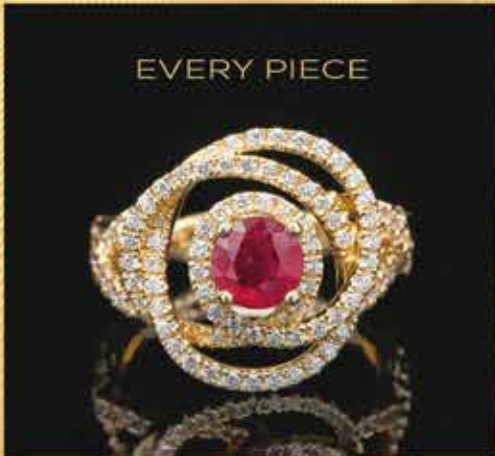


*App en portal voor het
beheer van je lader*

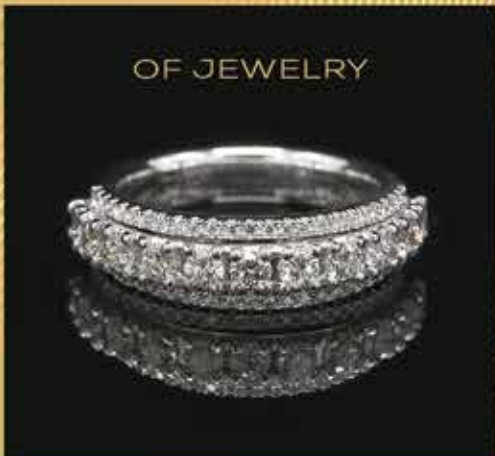


* Onderdeel van abonnementsformule €4,3/maand

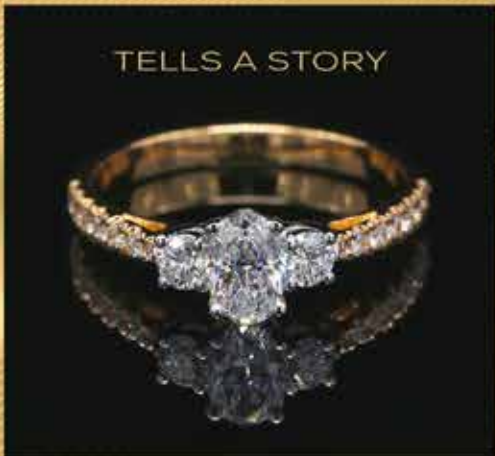
EVERY PIECE



OF JEWELRY



TELLS A STORY



OUR PASSION IS OUR STRENGTH.

Exclusieve, met de hand gemaakte juwelen uit eigen atelier, al dan niet bezet met briljanten van absolute topkwaliteit (met certificaat).

Bijzonder uitgebreide en gevarieerde collectie zilveren juwelen en ook parels.

Ruime keuze aan kwaliteits uurwerken van de betere merken en in alle prijsklassen.

Ook unieke, genummerde collecties.

WWW.JUWELIERSVERLINDEN.BE
Nieuwe Bevelsesteenweg 70 . 2560 Kessel
T. +32 (0)3 481 89 95

Steeds welkom: di. t/m vr. van 10 - 18 uur,
za. van 9 - 16 uur, zo. & ma. gesloten.
Volg ons ook op Facebook



are important. ABB E-Mobility conducted a survey of all stakeholders in the chain. Users want to drive electric, but do not always know which charging solution they need. Installers want systems that are quick and easy to install to keep customers happy. Car dealers want to sell cars, but they also need to know about the appropriate charging infrastructure. Corporate asset managers want a quick overview of the charging infrastructure. The bottom line is that many factors are coming together.

THE NEED FOR FAST CHARGING IS GROWING

Fastned is working on a European network of 1,000 fast-charging stations at A-locations, where all electric cars can be charged using only power from the sun and wind. Tuur De Coninck, Country Manager Fastned Belgium: "We have a strong ecological mission. We currently operate more than 300 charging stations, 25 of which are in Belgium. We are also active in the Netherlands, Denmark, Germany, Switzerland, France, the UK and Spain. We mainly target motorways and motorway exits. In the Netherlands and the UK, we have already won several awards for our approach. Recently, we added the award for the best charging network in Belgium and France, awarded by the French Chargemap.

"2024 will be a key year. On the one hand, because the number of electric cars is expected to double again from 200,000 to 400,000 by the end of 2024. But that's only the beginning, because these are mainly company cars. In the coming years, millions of electric cars will be added in Belgium. Importantly, around half of households cannot install charging infrastructure at home. They do not have a driveway or garage, or the electricity grid is not strong enough. Therefore, fast charging is a necessary part of the charging mix and the need for public fast charging infrastructure will only increase in the coming years".

LEVEL PLAYING FIELD BENEFITS CONSUMERS

Tuur De Coninck: "The need for fast charging is greatest along motorways. When you're on the road, you don't have time to wait for hours before you can continue. That is why Fastned's focus as a provider of fast charging infrastructure is along motorways and at motorway exits. But these service areas are under the control of the government, and the current policy on refuelling and charging concessions is no longer adapted to the current situation."

"Together with the industry association EV Belgium, we want these concessions to be split up so that charging and refuelling can be



LEON VAN DE PAS

tendered separately. In other words, there should be a level playing field. New players that do not offer fossil fuels should have the same chance to win a tender for charging infrastructure as the old ones. As far as Fastned is concerned, all concessions can be adjusted, including existing ones. Additional competition in the market will only benefit consumers and ultimately the necessary transition to electric mobility.

GENTBRUGGE GETS EUROPEAN FIRST

Tuur De Coninck: "In Gentbrugge, we have already won the very first European tender where there is a ban on the sale of fossil fuels. It concerns two large fast charging stations along the E17 near Ghent, on both sides of the motorway. Each will have 12 charging

points, as well as picnic areas, playgrounds, toilets and shops. We want to start construction this year.

Fastned describes the two sites as the first “motorway service stations of the future” dedicated to electric cars. Up to a thousand electric vehicles of all models will be able to charge up to 300 kilometres per day in just 15 minutes. The two new large drive-through stations will feature 400kW chargers powered exclusively by solar and wind energy. The stations are designed to accommodate all types of electric vehicles, including longer vehicles such as trailers and light trucks. The stations will also feature the iconic yellow Fastned canopies with photovoltaic panels to protect customers from the rain and provide safe and convenient charging. Tuur De Coninck: “These stations set the standard for what electric drivers can expect on European motorways in the near future.”

SQUEAKY DISTRIBUTION NETWORK

Bouke van der Weerd is Chief Technical Officer at Huawei, a global player. Erik Van Beusekom is director of business development at Heliox, a market leader in DC fast charging solutions for eBus and e-truck fleets and passenger cars. The company was acquired by Siemens AG last year. During a discussion, you raised some pain points, such as grid capacity. Bouke van der Weerd: “We have to innovate. That means thinking ahead and taking into account all the aspects that the charging infrastructure needs to respond to customer demand. Among other things, this means expanding all networks. The distribution network is squeaking and creaking at every seam. Network operators such as Elia and Fluvius are busy “strengthening” the networks.

FUTURE: TO STAND STILL IS TO PAY

Bouke van der Weerd also painted a picture of the future. “We need to work on the ideal network in the coming decades. One focus should be that companies can exchange energy locally and support each other to meet their charging needs. Then you get small clusters of companies working together. As technology advances with smart solutions, the clusters can support each other. We are moving from the strong vertical structure that exists today to a bottom-up movement. The role of network operators will change. The motto will be: to stand still is to charge. There will be a much greater need for charging infrastructure where customers need it: on the road, at the point of purchase, at home, at work.

FASTER CHARGING OR GREATER RANGE

The audience was asked what should be the main focus: faster charging or longer range. The audience had a slight preference for longer range, but the two panellists disagreed. Erik Van Beusekom: “You need a certain range, but if you can drive 300 km, that’s basically enough. With a petrol car, you can go longer distances without refuelling, but then you stop every now and then. If you need to recharge the car, you can consider that a break and you immediately have a long range. We are seeing a big shift from slow chargers to fast chargers. With the new EVs coming on the market, we have been working on a faster charging solution with 300kW of power.

FLUVIUS: WORKING HARD FOR A STRONGER NETWORK

Hans Van Sebreeck, mobility expert at Fluvius, highlighted the precarious situation in the Netherlands. In December last year, it was announced that a large part of the electricity grid in the Dutch provinces of Groningen and Overijssel would be shut down, according to grid operators TenneT and Enexis. Earlier, grid operator Stedinal announced that the power grid in The Hague was full. “The electricity grid in the Netherlands is under pressure because companies and consumers are demanding additional capacity at an increasing rate, for example because they are switching from natural gas or going electric. Grid operators cannot expand the grid as quickly as demand is increasing. It was not foreseen that the demand for electricity would grow so fast. The lack of electricity mainly affects businesses. They cannot get the electricity they need,” he said.

Fluvius does not see any major problems with available capacity in Belgium at the moment, but looking ahead is crucial. Fluvius expects exponential growth, with 400,000 electric vehicles in Belgium by 2050. About half of long-distance heavy goods transport will be electric, and 90% of local distribution transport.

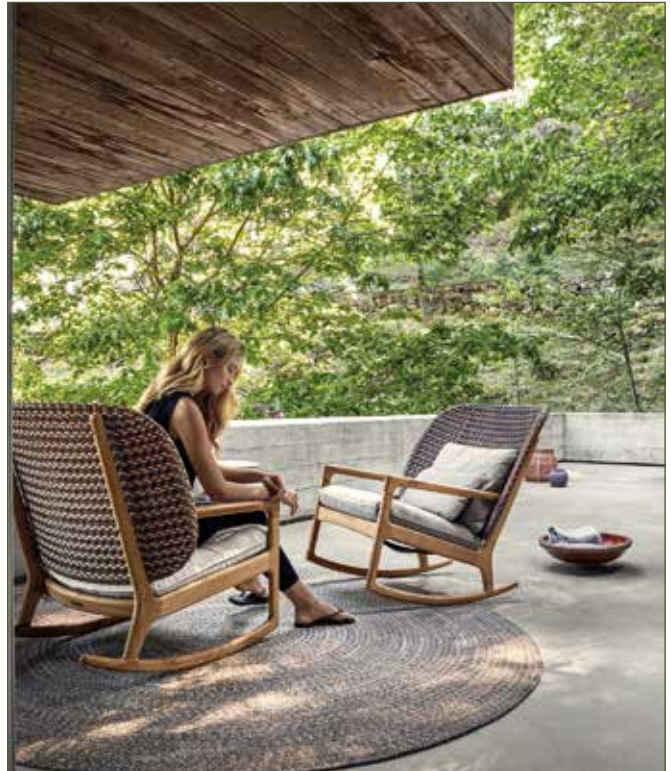
CAPACITY TRANSPARENCY

It is important not to sit back. Between June 22 and May 23, 37 fast-charging infrastructure sites were put into operation. Six staging areas for De Lijn electric buses have been completed. They are technically ready, and 49 are planned. Fluvius plans to reinforce 40% of the low-voltage cables, or 30,000 km, and to adapt 750,000 house connections. It will also reinforce 13% of the medium-voltage cables and one in three distribution cabinets. This is based on the short-term energy transition: 2032. Fluvius undertakes to be transparent about the capacity of the network, to invest in time and to look for alternatives if necessary.

In onze **sfeervolle showroom** staat een zorgvuldig gekozen selectie **luxe tuinmeubelen** van 's werelds beste tuinmeubelmerken zoals **Royal Botania, Gloster, Manutti, Gloster, Fast, Borek** en vele andere.

Ongeveer 100 verschillende **tuinsets, lounge-sets** en **ligbedden** staan uitgesteld. Te samen met tientallen verschillende uitvoeringen van **parasols**.

Zo hebt u de mogelijkheid om de kleuren en afwerking te zien en ze te testen natuurlijk op zitcomfort. Graag nodigen we u dan ook uit voor een bezoek aan onze showroom.



Van Mele

TUINMEUBELN



KWALITEIT • SFEER • PERSOONLIJK ADVIES
100 VERSCHILLENDE SETS IN SHOWROOM

BARLOW TYRIE – BOREK – DOMANI – EXPORMIM – FAST – GLOSTER – HEATSAIL – JARDINICO – LAFUMA –
LES JARDINS – MANUTTI – MAX&LUUK – POINT – ROOLF – ROYAL BOTANIA – SOLPURI – VINCENT SHEPPARD

www.vanmele.be

Ardoystraat 82 • 9220 Hamme • tel.: 052/47.90.14 • voor meer info kijk op onze website

FAST CHARGING STATION FOR HEAVY GOODS VEHICLES: GELDERMALSEN

The electrification of trucks also received a lot of attention at the conference. WattHub is responding to this by implementing fast-charging points for heavy equipment in the construction and transport sectors. This is done using renewable energy. Managing director Gerben van den Berg pointed out that the market share of zero-emission construction sites in the Netherlands will increase from 0 to 10% between 2019 and 2023. So there is definitely potential. He presented the project in Geldermalsen (Gelderland). WattHub is an offshoot of the Dijkversterking Tiel-Waardenburg project. This was realised by the construction consortium Mekante Diek and in cooperation with Betuwewind, a local energy cooperative in Gelderland. There, WattHub has set up the first fast-charging station for heavy construction equipment and electric trucks. "It is a state-of-the-art charging plaza for heavy equipment and trucks with a capacity of 10 megawatts. With 43 charging poles and a maximum speed of 400 kW, you can charge heavy equipment and trucks in no time".

The charging plazas are built and arranged in such a way that you can easily load a truck and trailer. WattHub chooses strategic, easily accessible locations, often on the motorway.

WattHub works differently to the current standard loading bays. "We work with (company) accounts and on the basis of reservations. This means that WattHub offers 100% certainty of fast charging with no waiting time, in the time slot reserved. We aim for 100% local, sustainably generated electricity. We achieve this by using wind and solar energy directly. The ambition is to become a major player in the market and achieve a nationwide network by 2030. That means, among other things, speed in finding the most potentially suitable locations".

FAST CHARGING STATION IN BRUGES

'Bruges gives energy' is a unique platform by and for entrepreneurs, in cooperation with the city of Bruges. It is designed to help businesses with energy-related issues, such as sustainability and electric driving. "What is special is our approach of working together. For example, we buy solar panels in bulk to keep the price down," says chairman Frank De Lannoit. A major project in the pipeline is a fast-charging station for electric trucks. "We are moving towards low-emission cities. This also means that logis-

tics infrastructure is needed. The city of Bruges wants to realise this with us, 2.5 km from the city centre and 6 km from the port of Zeebrugge. We found a 69,000 m² site on the Pathoekeweg, large enough for trucks to manoeuvre and for some services to be provided. Importantly, it is also situated next to the Baudouin Canal, which allows for deliveries by sustainable barges. There is also a wind turbine that will be directly connected to the "fast charging plaza". The project will be implemented in phases. The first chargers are due to be installed this year. Research into the best systems is ongoing. Cybersecurity and grid capacity are key concerns.

INTERESTING TARIFFS

In preparation, there was the Clean Power for Transport project. Companies could apply for subsidies for charging infrastructure. Frank De Lannoit: "Charging infrastructure turned out to be a big challenge. We decided to build a collective facility, also in cooperation with Transport Gheeraert from Loppem. This company has 120 trucks, 80 of which can drive electric but it is sometimes difficult to charge them. We want to open the collective fast-charging plaza to all companies in the region. We also aim for interesting tariffs. We are thinking of 30 cents kWh to make it feasible."

Frank De Lannoit points out that it will be very difficult for smaller transport companies to stay financially afloat. He spoke to several companies and often heard that the financial margin fluctuates between 2 to 3 per cent, which is extremely tight and makes investment in charging infrastructure unfeasible. "In 2023, some 700 transport companies went bankrupt, which is huge. They were mostly small companies. Currently, there is also a trend towards takeovers."

"Cooperation with the city administration is important. Local governments can be drivers of such projects. It will also be a white label city hub to avoid every carrier driving into the city centre. Anyone can deliver goods which are then bundled with smaller electric vehicles to their destination. You can safely describe us as a reference project that can inspire other cities."

www.congreslaadinfra.be



MARC VANDENBERGH - VAN MOSSEL

PLUON WINS LAADINFRA INNOVATION AWARD

The Award sought innovations that boost Belgium's charging infrastructure. The winner was chosen on the basis of the jury's vote (50%) and online votes in advance and during the Congres Laadinfra '24 (50%). The jury consisted of Philippe Vangeel (Avere), Romain Denayer (EV Belgium) and Luberto van Buiten (Editorial Board of Congres Laadinfra).

To conclude the congress, the Laadinfra Innovation Award was presented. Winner was PLUON from Dilsen-Stokkem, a European producer of sustainable, smart and stylish charging infrastructure. PLUON won the Award with its patented PLUON Modular System, intended for AC charging posts. The AC Pluon charger has a charging capacity of up to 22 kilowatts. The AC PLUON charging stations feature smart technology and are compatible with common CPO platforms.

Thanks to the future-proof PLUON modular system with easily interchangeable head and upgradeable components, uptime is optimal. The charging station comes to the technician in case of failure instead of the technician to the charging station. Thus, the customer does not suffer from faulty charging posts and in case of future innovations, the post can be adapted, away from the disposable culture and full commitment to sustainability.

The advantage for the user is that the pole works effectively due to its 99% uptime. This minimises the chances of the pole not working. With new innovations, the charging pole can be adapted, making it immediately sustainable. For example, there is the evolution where the car gives power to the grid. With reprogramming, the charging post can be used even then.

THINK LOCAL, ACT GLOBAL

The AC PLUON charging station is constructed with sustainable, ecological and proven locally produced materials. 'Think local, act global' lies at the heart of this conscious choice. Ninety-five per cent recyclable materials are used. Pluon is committed to using locally generated energy in combination with locally produced raw materials. The aluminium housing for the charging stations' frames is produced within a 50 km radius. An added plus is the beautiful, sleek design.





Renoveren is een kunst

Wij staan al meer dan 50 jaar garant voor zorgeloos bouwen en renoveren in het hoogste segment. Als bouwheer wordt u bijgestaan door een geselecteerd team dat uw droom vertaalt in een ontwerp op maat.

www.bplus.com

+32 16 55 35 60

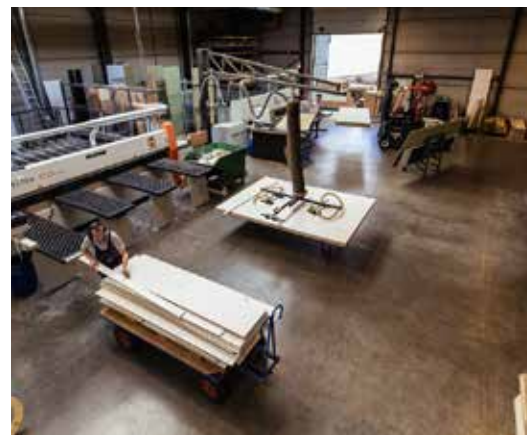
TILBORGH'S

Hout en Interieur

Wanneer vakmanschap het verschil maakt



Algemene houthandel | Binnendeuren | Parket & laminaat
Maatkasten in bouwpakket | Terras- en gevelbekleding



Open op maandag t.e.m. donderdag: 08u-12u en 13u-18u | Vrijdag: 08u-12u en 13u-16u | Zaterdag: 09u-12u

Voor binnendeuren en maatkasten in bouwpakket gelieve vooraf een afspraak te maken.

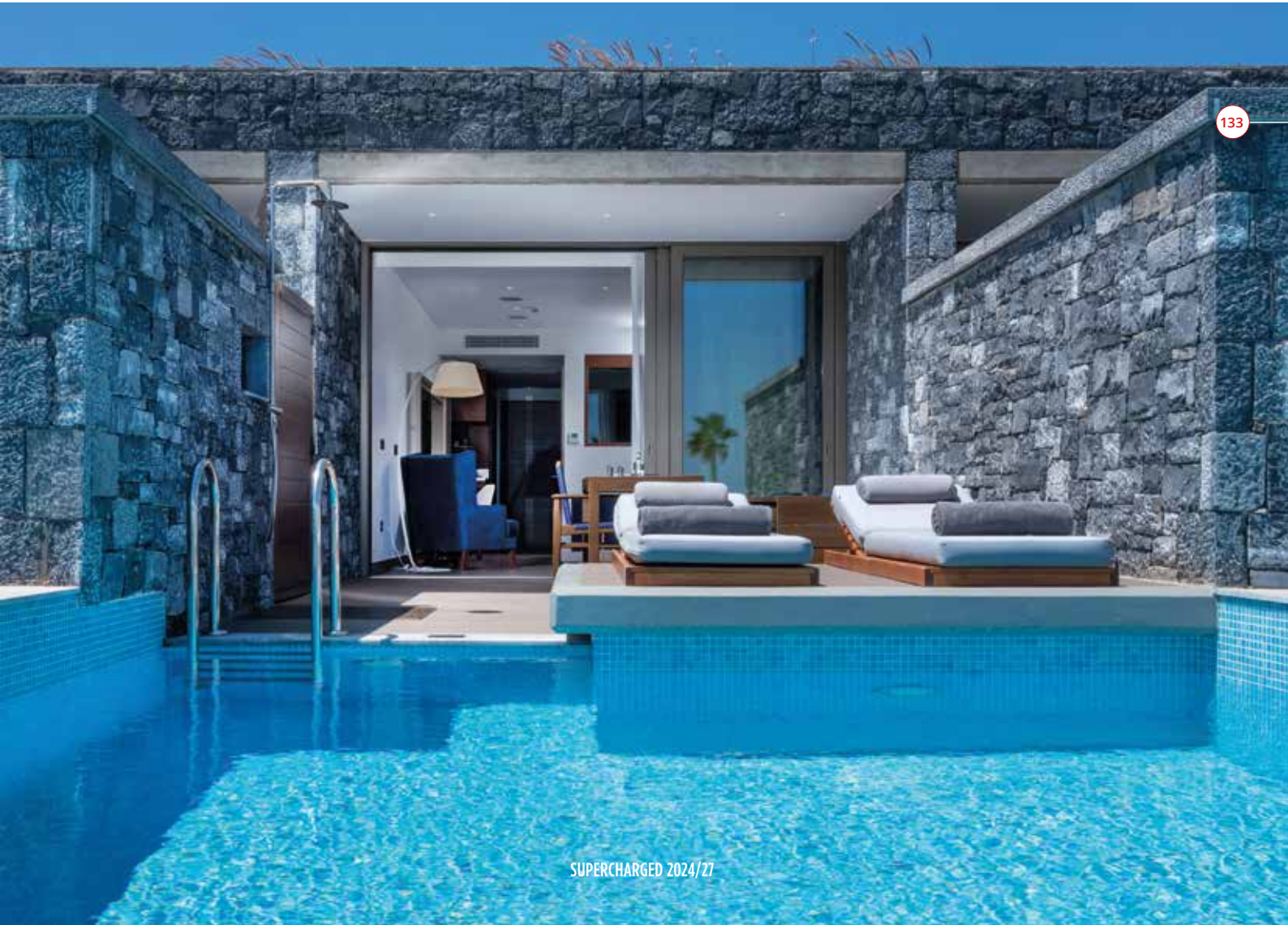
Onderzeel 7 i.z. Bosduin, 2920 Kalmthout | t +32 3 666 81 14 | info@tilborghshout.be | www.tilborghshout.be

NANA PRINCESS:

WHEN CRETE IS YOUR DESTINATION AND YOU WANT AN EXPERIENCE THAT WILL LAST A LIFETIME

You can only make a good first impression once, because it lasts a lifetime. That's what people say anyway, and in the case of Nana Princess, you can take this literally. You step into the gigantic lobby with open sea views and immediately your day-to-day routine and stress falls right off your shoulders. Staying at Nana Princess is otherworldly, magical, sensational and above all soothing.

TEXT & PHOTOS: NANA PRINCESS HOTEL







The resort was built in 2018 and everything still smells like new. Although the army of staff will also have its share in this, as they are constantly working to give guests a unique experience. From dusk till dawn...

Architecturally, the hotel is worth admiring in detail. The lines merge effortlessly from the top of the resort to the sea and also provide the necessary peacefulness. The waterline of the suites with private pool

corresponds to the coastline. The window overlooking the sea from the bathroom also takes over that same waterline... It takes a while to notice, but once you do, you understand where the architect wanted to go. The harmony reflected in the whole is fantastic.

You have breakfast in a covered (but open) space with - how could it be otherwise - full view of the private sea strip. And breakfast is taken particularly seriously here. Plenty of choice!

The obligatory Olympic-sized outdoor (and indoor) swimming pool, the 3 restaurants and several bars, the gym, the spa, the private beach and the pier... Everything is there to keep you from getting bored, should you choose not to visit the island and just enjoy Nana Princess.

Before we let you loose on the pictures that say even more than our superlatives, let us add two more highlights. The Half Board Dine Around formule which includes Dinner at one of the two à-la-carte restaurants with free choice from the à-la-carte menu

(4-courses dinner, excluding beverages). In which we will especially remember the fish restaurant - literally on the edge of the beach and completely open, which is lovely on a balmy summer evening - forever and for a long time to come.

The level is - even for us spoilt Belgians - GI-GANTI-CALLY high. All staff-members put the resort on a lonely level and do full credit to the facilities. This place will still make many pots in the international resort market. And rightly so!



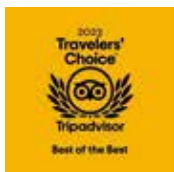
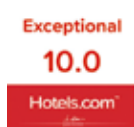


WHERE TO FIND NANA PRINCESS

The Nana Princess is located next to the Nana Golden Beach Hotel on a peninsula outside the coastal town of Chersonissos in the north of Crete, Greece's largest island. Overlooking the Cretan Sea,

Chersonissos is approximately 25 km from Heraklion Airport and 27 km from Heraklion ferry port.

For more info : <https://www.nanaprincess.gr/>







wolfin


EYEWEAR



Designed in Belgium,
made in Italy

YOU TOO CAN SHINE!
WWW.WOLFIN-EYEWEAR.BE



 [wolfin_eyewear](https://www.instagram.com/wolfin_eyewear)

 [@wolfin_eyewear](https://www.facebook.com/wolfin_eyewear)



Abitare, uw totaalconcept

Puntstraat 2 | 2440 Geel
Bredabaan 737 | 2930 Brasschaat
Brugstraat 34 | 2820 Bonheiden
abitare.be

ABITARE
MOOI WONEN